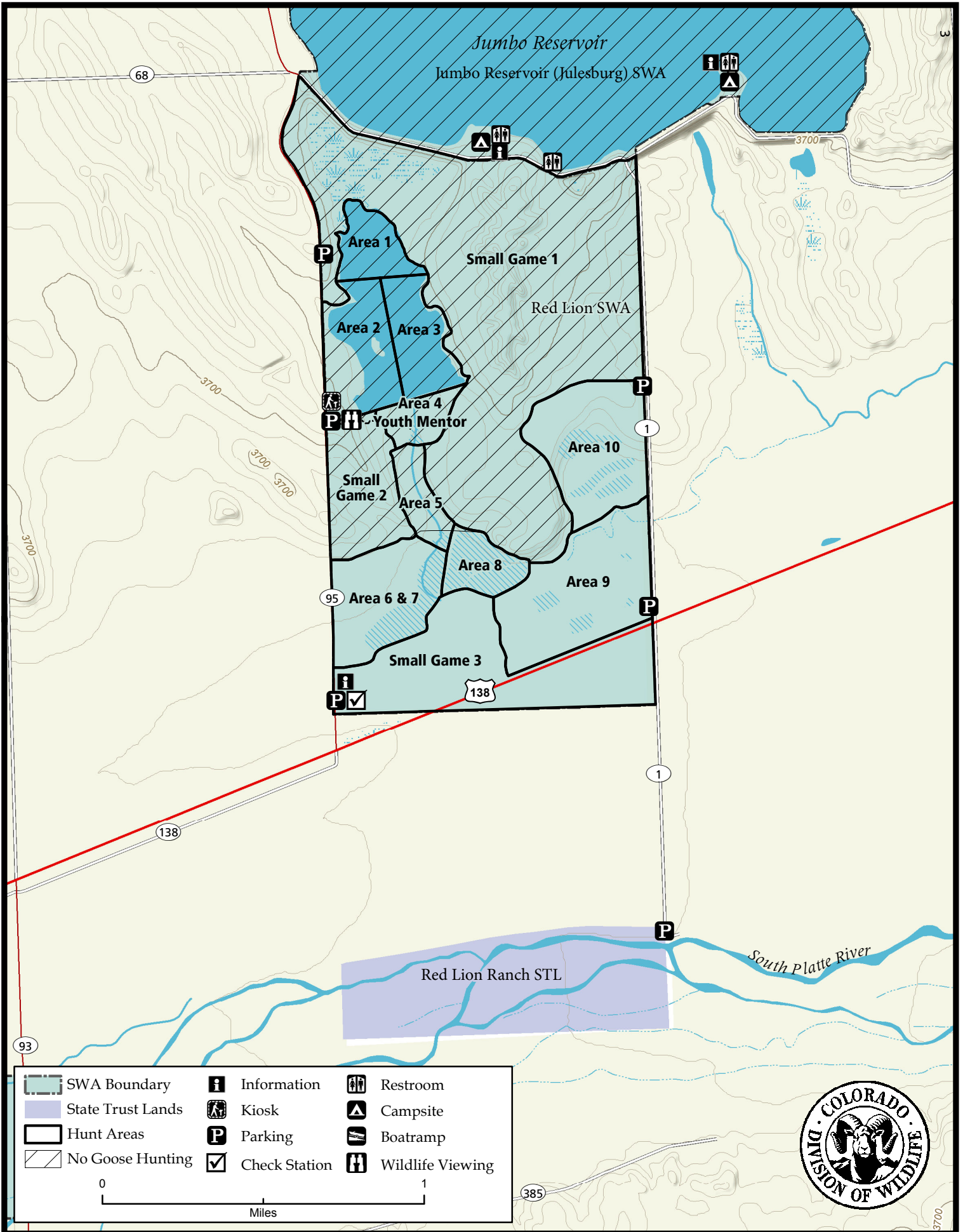


Red Lion State Wildlife Area

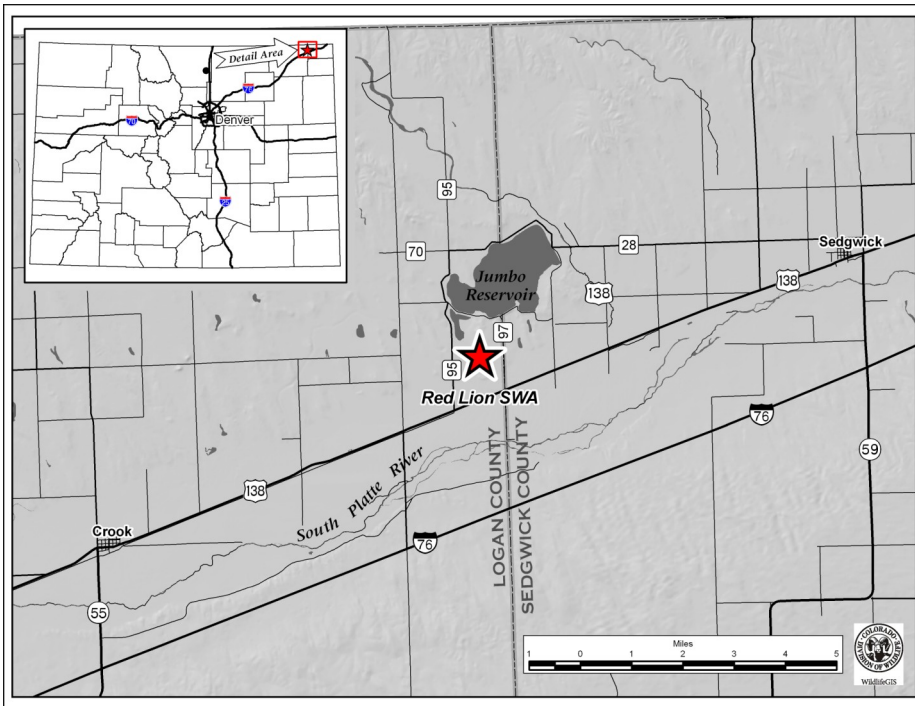


	SWA Boundary		Information		Restroom
	State Trust Lands		Kiosk		Campsite
	Hunt Areas		Parking		Boatramp
	No Goose Hunting		Check Station		Wildlife Viewing

0 1
Miles



Red Lion SWA & Red Lion Ranch STL -Logan Co.



Red Lion SWA: From Interstate 76 at the Red Lion Road exit (Exit 155), go 2 miles north to US 138, then 1 mile northeast (right) to County Road 95, then 1/4 mile north (left) to the three parking areas located on the west side of the property. Additional parking areas are located to the east on Sedgwick County Road 1.

Red Lion Ranch STL: From Crook, go NE on Hwy 138 for 8 1/4 miles to the Sedgwick/Logan County line, turn south on CR 1 and go 1 1/4 miles to the parking area. Parking are off of CR 1 just north of the river bottom.

Wildlife Area Offers:

Hunting: SWA: (GMU 90/92) Rabbit, Pheasant, Dove, Bobwhite Quail, Waterfowl (as posted)
STL: (GMU 92) Deer, pheasants, Quail, Turkeys, Ducks, Geese, Rabbits, Squirrel

Fishing: Warmwater

Recreation: Wildlife Viewing

Regulations – Red Lion SWA:

- A. Boating is prohibited, except for float tubes or carry-on craft-propelled by hand for fishing or hunting purposes only.
- B. Boating is prohibited from October 1 to March 31, except for hand-propelled craft used to place or retrieve decoys or retrieve downed waterfowl.
- C. Fishing is restricted to the dam from October 1 to March 31. Ice fishing during this time is restricted to within 50 yards of the dam.
- D. Hunting is prohibited from the frozen surface of the lake.
- E. Hunting is prohibited from any floating device.
- F. Camping is prohibited.
- G. Fires are prohibited.
- H. Target practice is prohibited, except when authorized by the area wildlife manager.
- I. Discharge of firearms or bows is prohibited, except when hunting.
- J. Discharge of bows is allowed for bowfishing.
- K. During the special late light goose season and any conservation order for light geese, light goose hunting is allowed in the area bounded on the north by Logan Co Rd 970, on the east by Logan Co Rd 97 (Sedgwick Co Rd 1), on the south by US 138, and on the west by Logan Co Rd 95.
- L. All access must be from designated parking areas only.
- M. Beginning with the first day of the regular duck season through the last day of the regular duck season the following regulations will apply:
 1. All waterfowl and small game hunting on Red Lion State Wildlife Area is regulated by a reservation system and through a mandatory check station. During this period all hunting is by reservation only. Reservations may be made in accordance with #901.A of these regulations. Hunters with reservations may only hunt the hunt area specified on the reservation. Hunting reservations are regulated by areas. There are nine waterfowl reservations, three small game reservations, and one area is reserved for youth/mentor hunting only (No more than two mentors and at least one youth per reservation). Hunters must follow check-in and checkout procedures as posted at the property.
 2. Waterfowl and small game hunters are required to check out at the designated check station.
 3. No more than four people per reservation.
 4. Mentors must be at least 18 years of age and have a valid hunter education certificate. Mentors are not required to hunt.
 5. Waterfowl and small game hunting is permitted only on Saturdays, Sundays, Wednesdays, Columbus Day (observed), Veterans Day (observed), Thanksgiving Day, Christmas Day, New Year's Day and Martin Luther King Jr. Day.
 6. Waterfowl and small game hunters must check out by 2:00 pm daily.
 7. Deer hunting is permitted daily during established deer seasons. Deer hunters are not required to check out at the check station. Deer hunting reservations are required and are unlimited in number.
 8. All uses other than hunting are prohibited.

Jumbo Reservoir, Red Lion, Logan and Sedgwick Counties

Hunting of geese is prohibited in those portions of Logan and Sedgwick counties bounded on the north by Logan Co Rd 70 and Sedgwick Co Rd 3; on the east by Sedgwick Co Rd 3; on the south by Logan Co Rd 970, and on the west by Logan Co Rd 95, except as otherwise provided for the Red Lion State Wildlife Area in Chapter 9 of these regulations.

Regulations – Red Lion Ranch STL:

- A. Public access is prohibited from June 1 through August 31.
- B. Access is permitted only as posted.
- C. All recreational activities, except deer hunting, are prohibited on the opening weekend of the regular plains rifle deer season and on the opening day and first weekend of the late plains rifle deer season.
- D. Horse use is prohibited, except when used in direct association with training of hunting dogs, and then only permitted in February, March and April (through the Wednesday immediately preceding the opening of the spring turkey season).
- E. The launching or takeout of vessels is prohibited from the first day of the September teal season until the last day of the dark goose season.

In addition to or in place of those restrictions listed in regulation #900 the above listed provisions or restrictions apply (see Chapter 9, <http://wildlife.state.co.us/RulesRegs/Regulations/>).