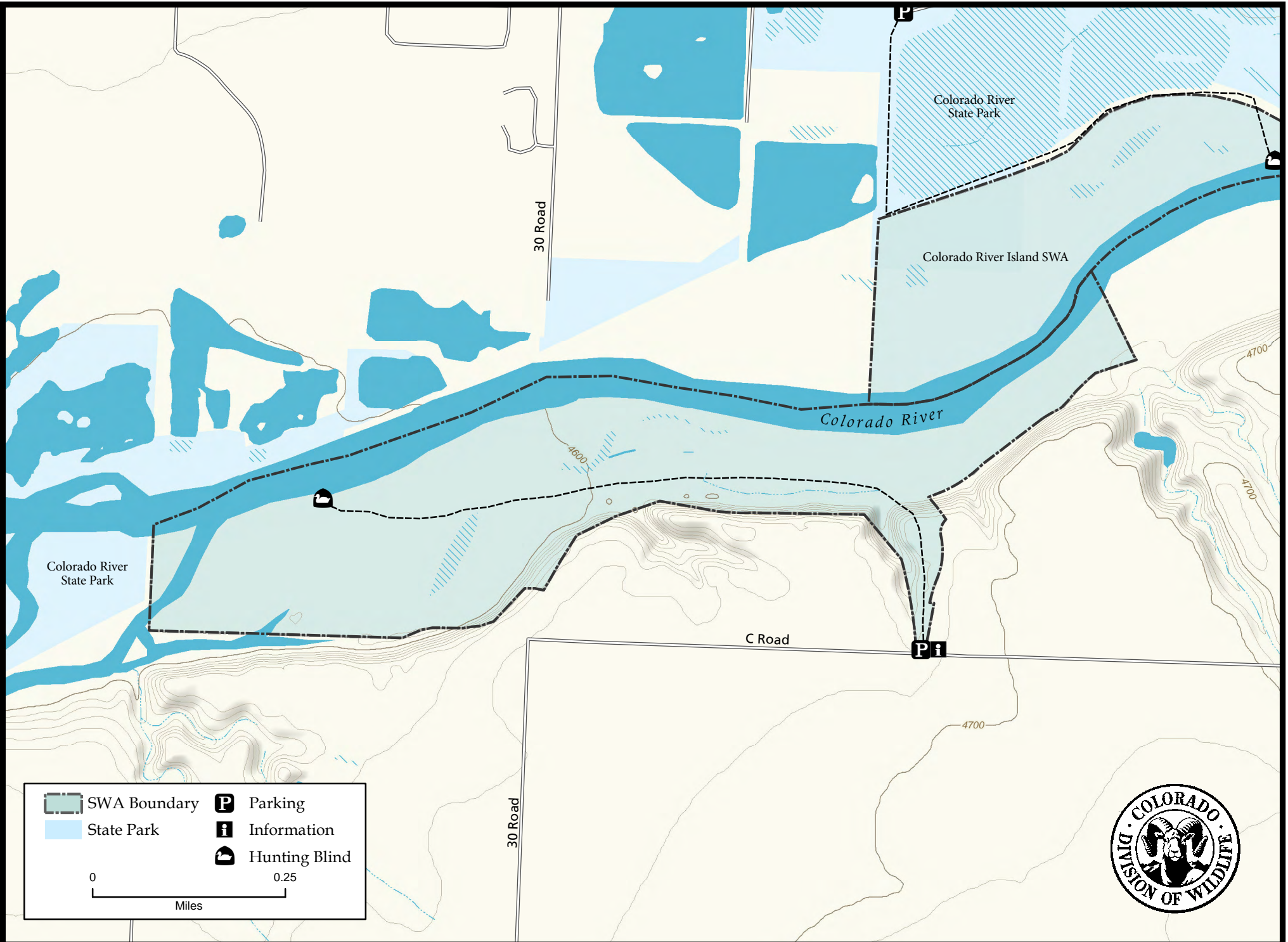


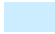




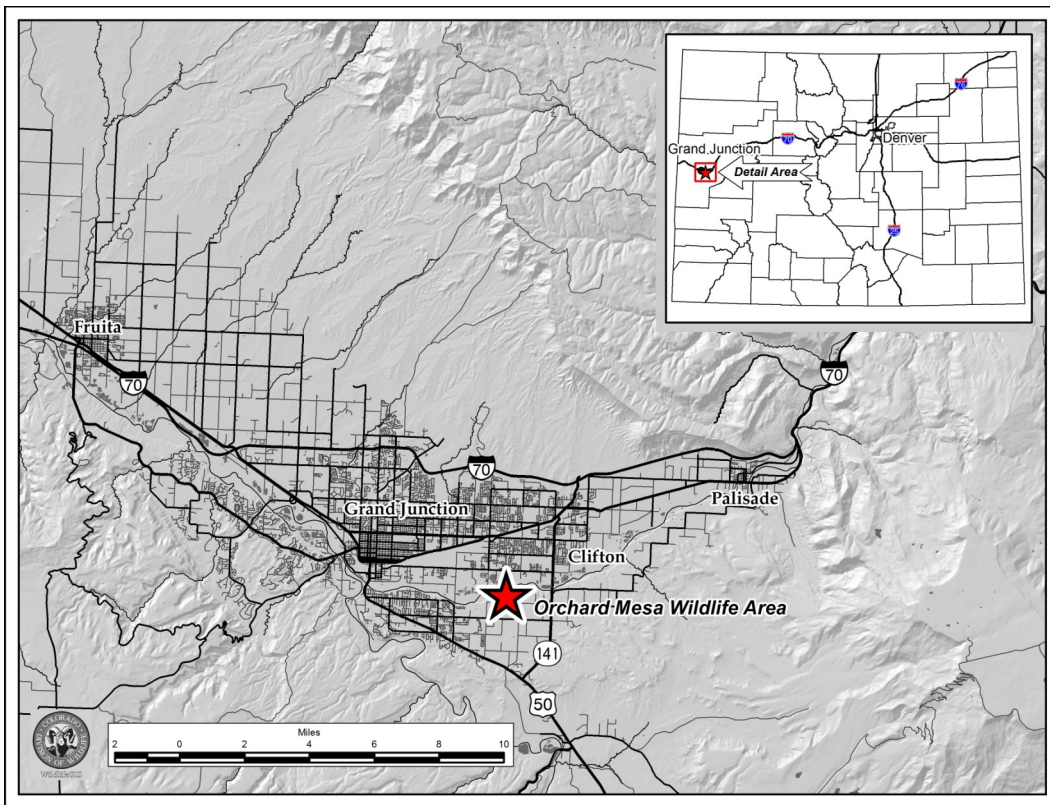
Orchard Mesa Wildlife Area



 SWA Boundary	 Parking
 State Park	 Information
	 Hunting Blind

0 0.25
Miles





Orchard Mesa Wildlife Area Mesa County

From the Riverside Parkway take 29 Rd. South across the Colorado River. Turn left (East) on B 1/2 Rd, proceed one mile to 30 Rd. Turn left (North) onto 30 Rd. and proceed 1/2 mile to C Rd. 30 Rd turn right, and turns into C Rd. follow C Rd. approximately 1/2 mile to parking area on the left next to large Cottonwood tree.

Wildlife Area Offers:

Fishing: Warmwater
Hunting: Waterfowl
(GMU 41)

More Information:

CDOW Office (Grand Junction): (970) 255-6100
CDOW Website: <http://wildlife.state.co.us/>

Restrictions:

- A. Access to the Wildlife Area is only from the parking area located on "C" Road between 30 and 31 Roads.
- B. Camping and fires are prohibited.
- C. Vehicles are prohibited beyond the parking area.
- D. Horses are prohibited.
- E. Public access is prohibited from March 15 to July 14 annually to protect nesting migratory birds.
- F. Waterfowl hunters must hunt from designated blinds or zones identified for each blind. No more than four hunters allowed per blind.
- G. No other small game hunting allowed.
- H. Deer hunting allowed by permit only. Permit applications available from the DOW in Grand Junction 970-255-6100. Permits will be issued by a drawing with an application deadline of August 1.
- I. Hunting restricted to bows and shotguns with shotshells only.
- J. Dogs prohibited, except as an aid to hunting.
- K. Waterfowl hunting on this property is by reservation only. Reservations may be made in accordance with #901.A of these regulations. Hunters with reservations may only hunt the hunt area specified on the reservation. Hunters must follow check-in and check-out procedures as posted at the property.
- L. Hunt areas that have not been reserved will be available on a first-come, first-served basis after 5:00 am on each hunting day. Reserved hunt areas unoccupied by 7:00 am will be available on a first-come, first-served basis. However, any hunt area must be yielded at any time upon request of a hunter holding a valid and active reservation for that area.

In addition to or in place of those restrictions listed in regulation #900 the above listed provisions or restrictions apply (see Chapter 9, <http://wildlife.state.co.us/RulesRegs/Regulations/>).