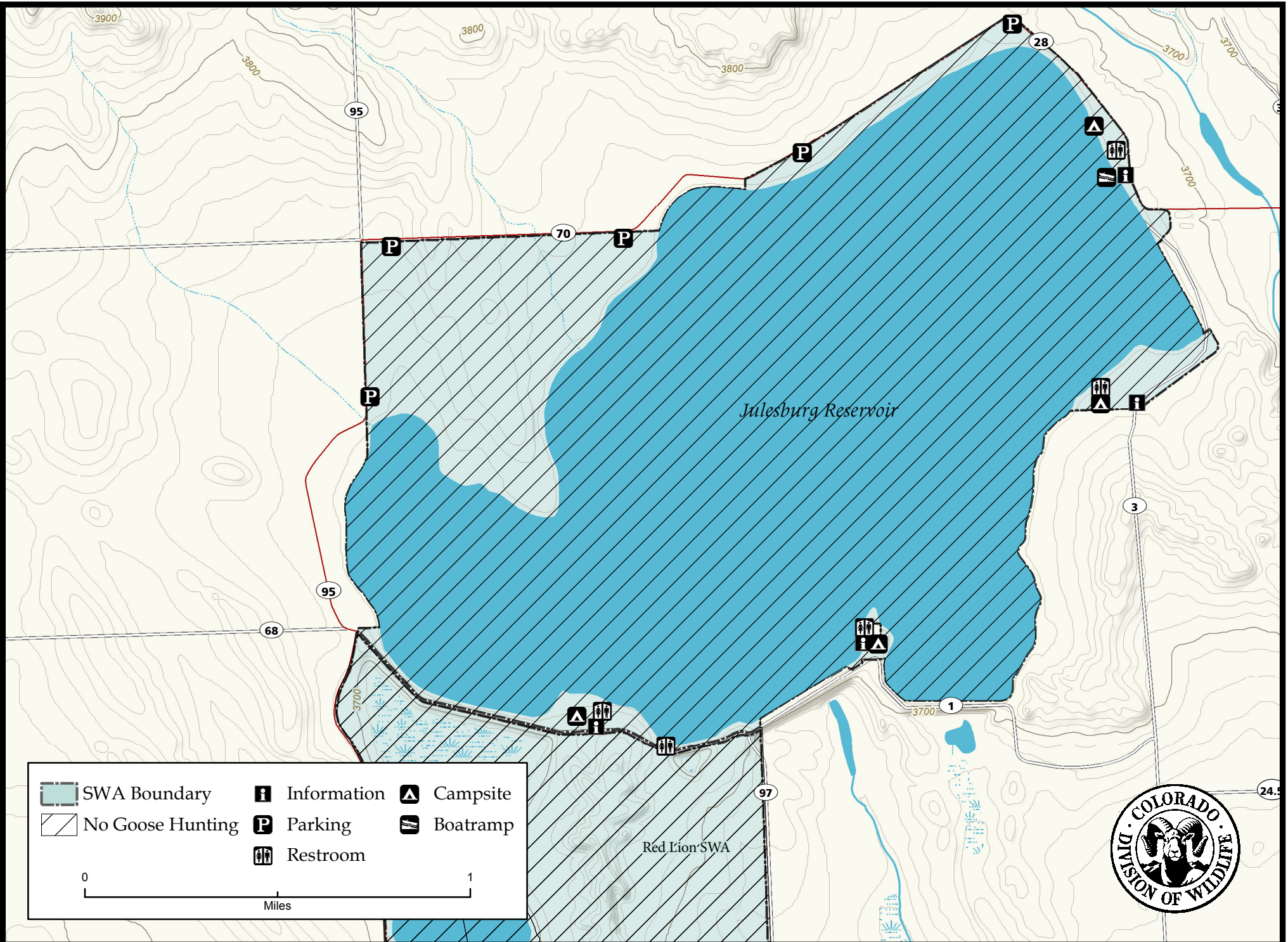


Jumbo (Julesburg Reservoir) State Wildlife Area



Jumbo (Julesburg Reservoir) State Wildlife Area Logan & Sedgwick Counties

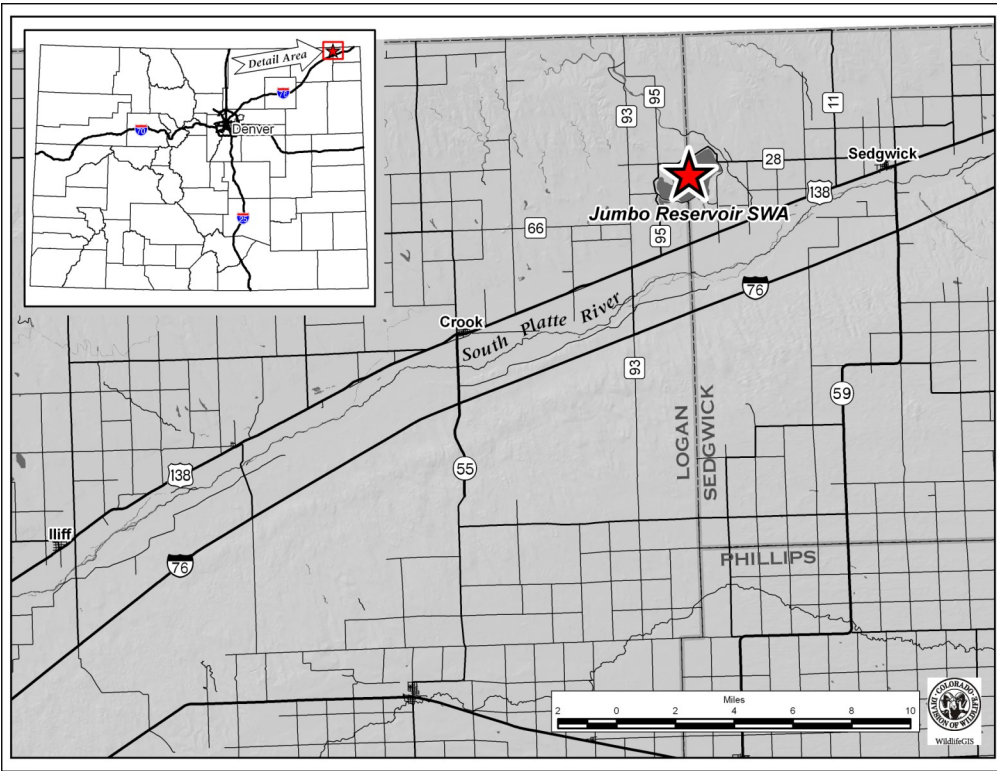
From Interstate 76 at the Red Lion exit (Exit 155), go 3 miles north (left) to Highway 138, then 1 mile north-east (right) to County Road 95, then 2 miles north (left) to the reservoir.

Wildlife Area Offers:

Hunting: Rabbit, Pheasant, Water-fowl, Dove
(GMU 90)
Fishing: Warmwater
Recreation: Wildlife Viewing, Camping

More Information:

CDOW Office (Brush): (970) 842-6300
CDOW Website: <http://wildlife.state.co.us/>



#901.A: Reservations may be made by calling 1-800-846-9453. Reservations are not accepted more than 14 days in advance of the hunt date, nor after 12:00 noon on the day before the hunt date, or Friday at 12:00 noon for Sundays and holidays falling on Monday. Hunters who wish to cancel a reservation must do so no later than 12:00 noon on the day before the hunt date. Failure to hunt a reserved area without prior cancellation, or follow check station procedures, may cause forfeiture of the privilege to make reservations for the remainder of the hunting season. Hunters are limited to a maximum of one reservation per hunt date and one reservation per phone call. Reservations are not transferable. The individual named on the reservation must be at the property on the day of the hunt and be a licensed hunter for the species to be hunted.

Regulations:

- A. Any person age 19 through 64 must possess an annual Jumbo Reservoir/Prewitt Reservoir access permit in order to access this property, except that any person who possesses a current and valid Colorado annual hunting or fishing license is exempt from this permit requirement. Permits shall cost \$36, and are valid from April 1 - March 31 annually. Permits are available from any Total Licensing System vendor.
- B. Except as provided in subsection g below, boating is prohibited from October 1 through the last day of the regular goose season, except for craft propelled by hand may be used to set and pick up decoys and retrieve downed waterfowl.
- C. Fishing is restricted to the two south dams and the bank around the outlet tower from October 1 through the last day of the migratory waterfowl season.
- D. Boats are prohibited within 50 feet of the outlet structure.
- E. Hunting is prohibited from the frozen surface of the lake.
- F. The number of vehicles on the property is limited to 250.
- G. Waterskiing is prohibited before 10:00 a.m. and after 7:00 p.m. on Friday, Saturday, Sunday and Monday of the Memorial Day weekend.

- H. Hunting from floating devices is allowed from the opening day of the regular Eastern Plains duck season until the opening day of the dark goose season, as follows:
 1. To hunt from a floating device, a reservation is required. Reservations may be made in accordance with #901.A of these regulations. Three reservations are available for waterfowl hunting from vessels on Jumbo Reservoir. Boat hunting is prohibited beginning the first day of the regular dark goose season. Hunters with boat hunting reservations are required to call the reservation line two days before the scheduled hunt to confirm ice conditions. Only boat hunters with a reservation are exempt from the boat closure.
 2. Hunting from floating devices is allowed only on Saturdays, Sundays, Wednesdays, Columbus Day (observed), and Veterans' Day.
 3. All persons hunting from floating devices must leave the surface of the reservoir by 2:00 p.m.
 4. Boat hunters are prohibited from hunting within 150 yards of other vessels and hunters on shore.

Jumbo Reservoir, Red Lion, Logan and Sedgwick Counties

Hunting of geese is prohibited in those portions of Logan and Sedgwick counties bounded on the north by Logan Co Rd 70 and Sedgwick Co Rd 3; on the east by Sedgwick Co Rd 3; on the south by Logan Co Rd 970, and on the west by Logan Co Rd 95, except as otherwise provided for the Red Lion State Wildlife Area in Chapter 9 of these regulations.

Vessels (other than those launched by hand) must undergo required inspection for invasive species.

In addition to or in place of those restrictions listed in regulation #900 the above listed provisions or restrictions apply (see Chapter 9, <http://wildlife.state.co.us/RulesRegs/Regulations/>).