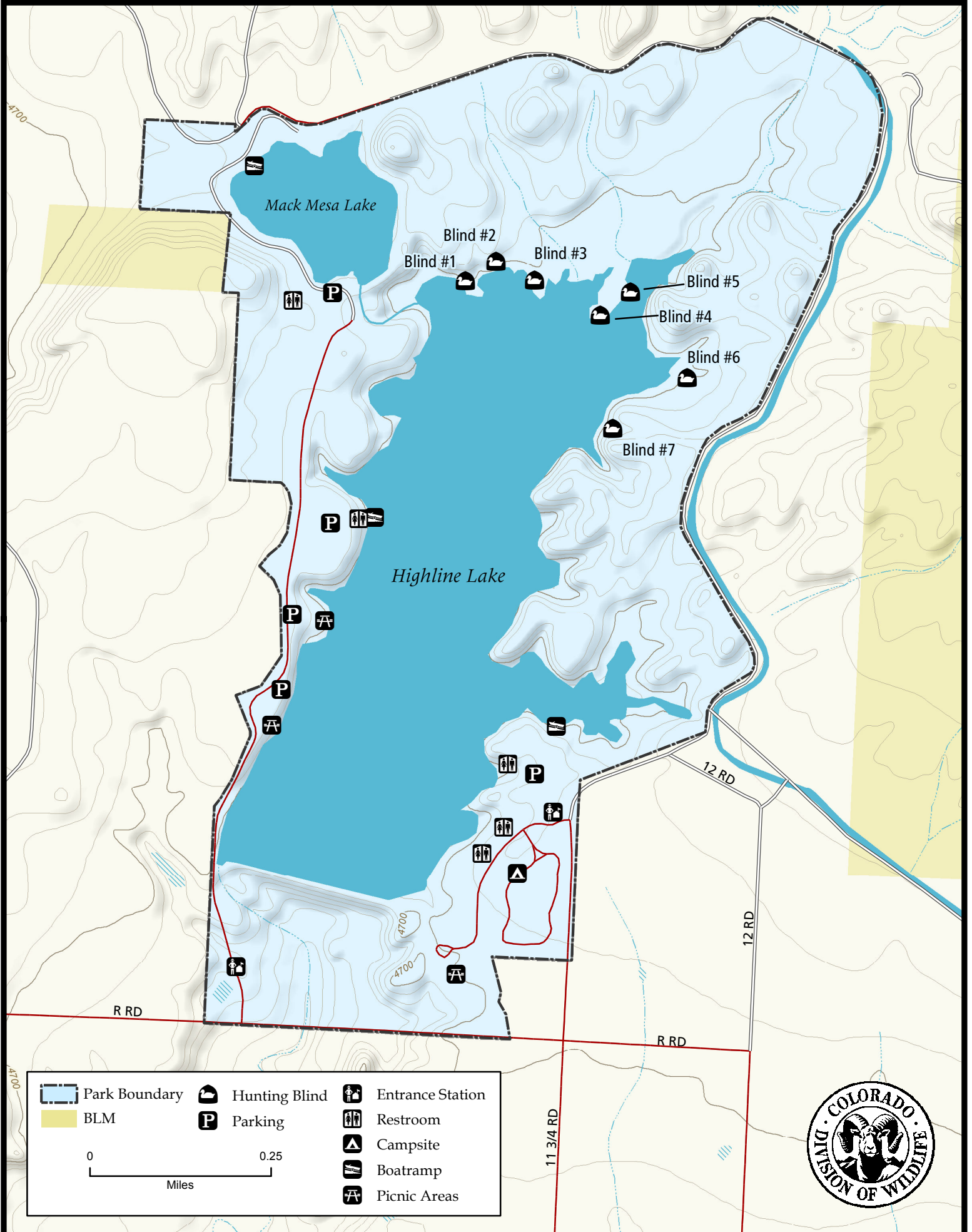
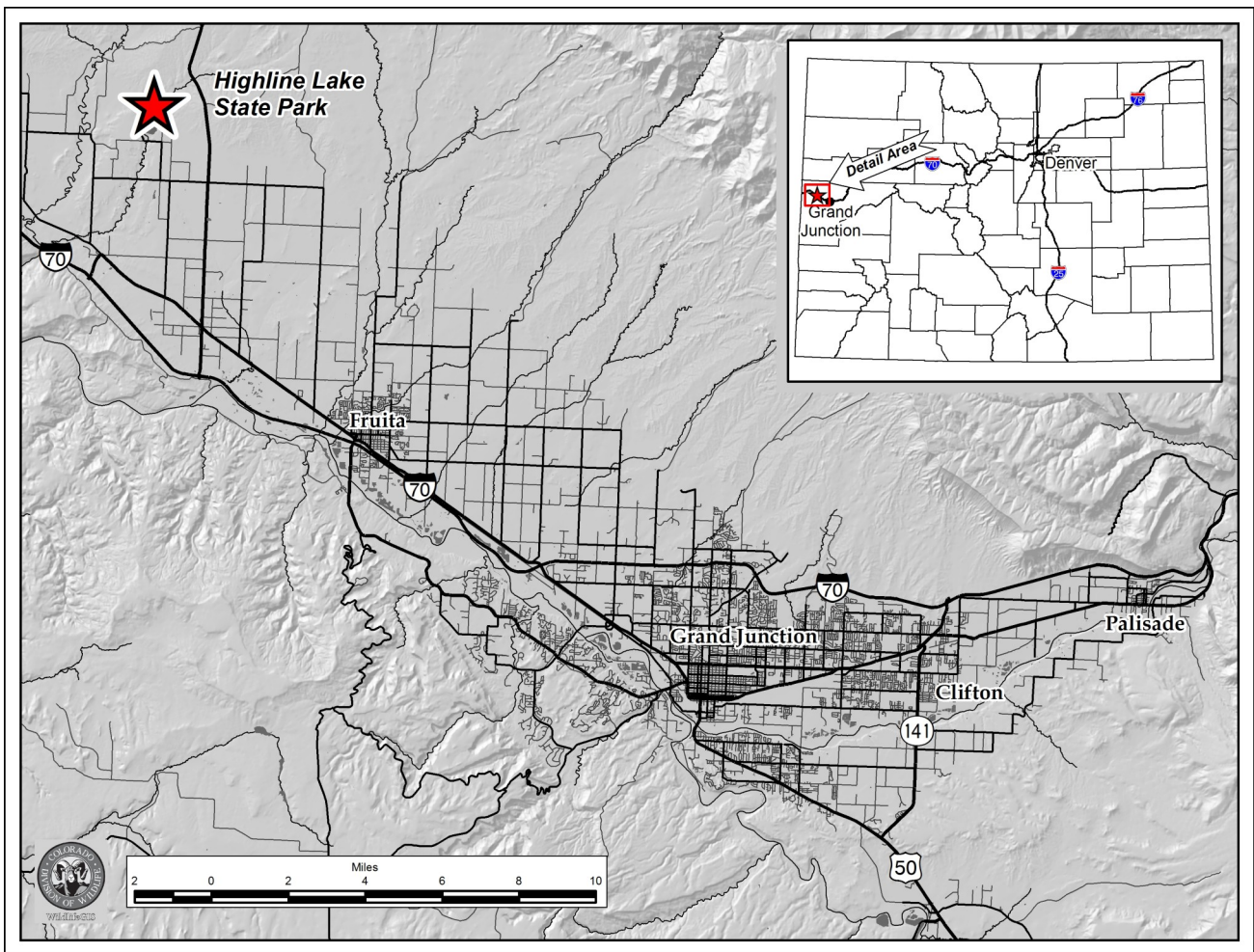


# Highline Lake State Park



	Park Boundary		Hunting Blind		Entrance Station
	BLM		Parking		Restroom
			Campsite		Boatramp
			Picnic Areas		





### Highline Lake State Park – Mesa County

Drive west on I-70 west from Grand Junction to Loma Exit, then north onto Colorado Highway 139 for six miles to Q Road. Go west on Q road for 1.2 miles, then turn north onto 11.8 Road for one mile to the park entrance.

#### Regulations:

All State Park rules and regulations apply. Please see the web site: <http://www.parks.state.co.us/Parks/HighlineLake/Pages/HighlineLakeHome.aspx> or call the Ranger station at (970) 858-7208 for current hunting information.

- A. Waterfowl hunting on Highline Lake is prohibited on Saturdays and Sundays.
- B. Waterfowl hunting is limited to designated blinds only, with a maximum of four (4) hunters per blind. 8
- C. Hunting on this property is by reservation only. Reservations may be made in accordance with #901.A of these regulations. Hunters with reservations may only hunt the hunt area specified on the reservation. Hunters must follow check-in and

- check-out procedures as posted at the property.
- D. Hunt areas that have not been reserved will be available on a first-come, first-served basis after 5:00 am on each hunting day. Reserved hunt areas unoccupied by 7:00 am will be available on a first-come, first-served basis. However, any hunt area must be yielded at any time upon request of a hunter holding a valid and active reservation for that area.

This product is produced and distributed by: Colorado Division of Wildlife - GIS Group, 317 W. Prospect, Fort Collins, CO 80526. Information depicted hereon is for reference purposes only and is compiled from best available sources. Mapped property boundaries may or may not reflect actual legal holdings. Please observe and respect all marked boundaries and signs on the property. Regulations are subject to change - posted regulations at the individual SWA take precedence over any regulations referred to here. For further information, please see regulations brochures available at CDOW offices or [wildlife.state.co.us](http://wildlife.state.co.us).