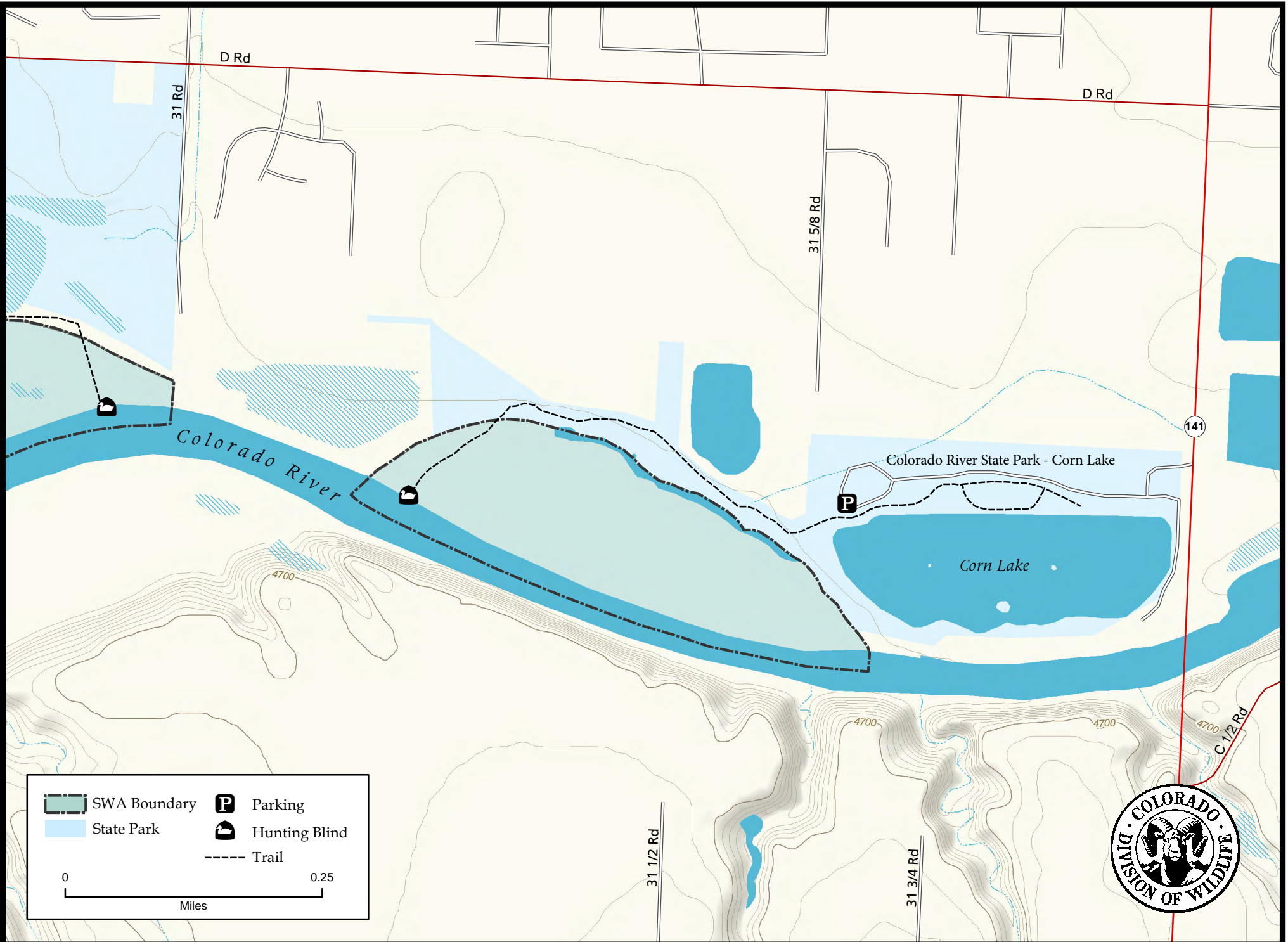
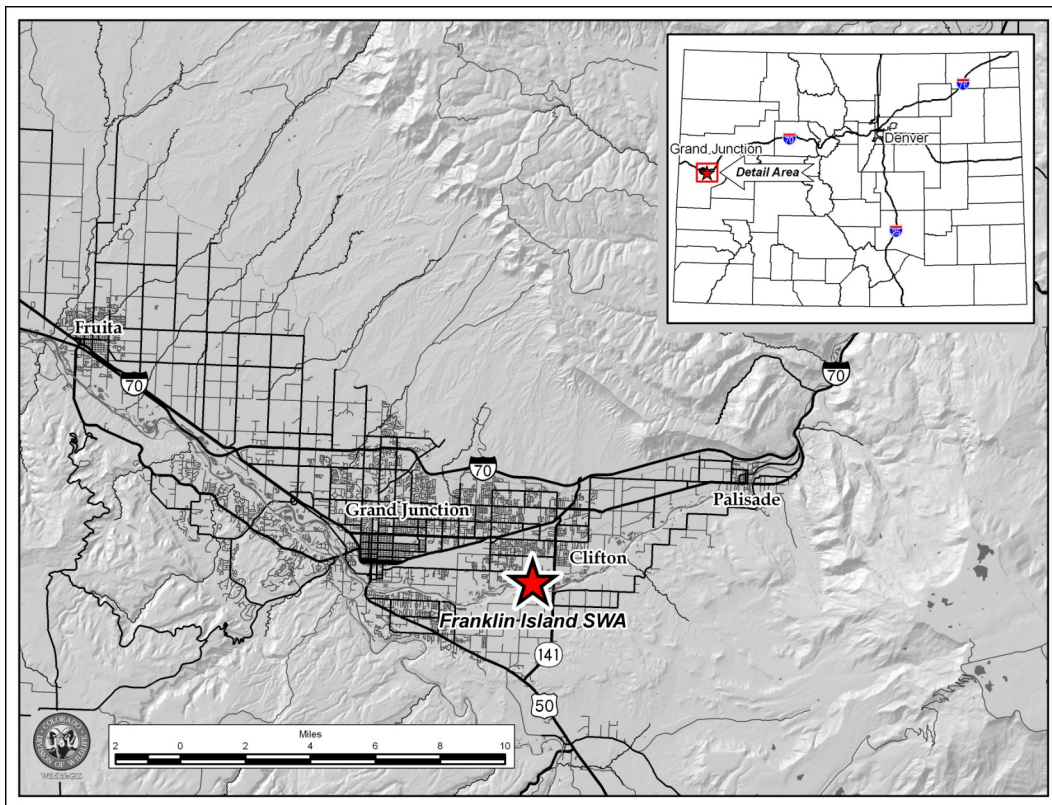


# Franklin Island State Wildlife Area





## Franklin Island SWA Mesa County

From I-70 B take 32 Rd South until you arrive at the Corn Lake section of the James M. Robb Colorado River State Park. The Park is on the west side of the road, and just north of the Colorado River. Hunters should drive to the west end of the park, and park at the furthest west parking area (A Parks Pass is required). Hunters should then proceed west on the Colorado Riverfront trail for approximately 1/2 mile until they arrive at the blind.

### Wildlife Area Offers:

Fishing: Warmwater  
 Hunting: Waterfowl  
 (GMU 30)

### More Information:

CDOW Office (Grand Junction): (970) 255-6100  
 CDOW Website: <http://wildlife.state.co.us/>

### Restrictions:

- A. Camping is prohibited.
- B. Hunting is prohibited, except for waterfowl hunting from designated blinds.
- C. Dogs are prohibited, except as an aid to hunting.
- D. Hunting on this property is by reservation only. Reservations may be made in accordance with #901.A of these regulations. Hunters with reservations may only hunt the hunt area specified on the reservation. Hunters must follow check-in and check-out procedures as posted at the property.
- E. Hunt areas that have not been reserved will be available on a first-come, first-served basis after 5:00 am on each hunting day. Reserved hunt areas unoccupied by 7:00 am will be available on a first-come, first-served basis. However, any hunt area must be yielded at any time upon request of a hunter holding a valid and active reservation for that area.

*In addition to or in place of those restrictions listed in regulation #900 the above listed provisions or restrictions apply (see Chapter 9, <http://wildlife.state.co.us/RulesRegs/Regulations/>).*

*This product is produced and distributed by: Colorado Division of Wildlife - GIS Group, 317 W. Prospect, Fort Collins, CO 80526. Information depicted hereon is for reference purposes only and is compiled from best available sources. Mapped property boundaries may or may not reflect actual legal holdings. Please observe and respect all marked boundaries and signs on the property. Regulations are subject to change - posted regulations at the individual SWA take precedence over any regulations referred to here. For further information, please see regulations brochures available at CDOW offices or [wildlife.state.co.us](http://wildlife.state.co.us).*