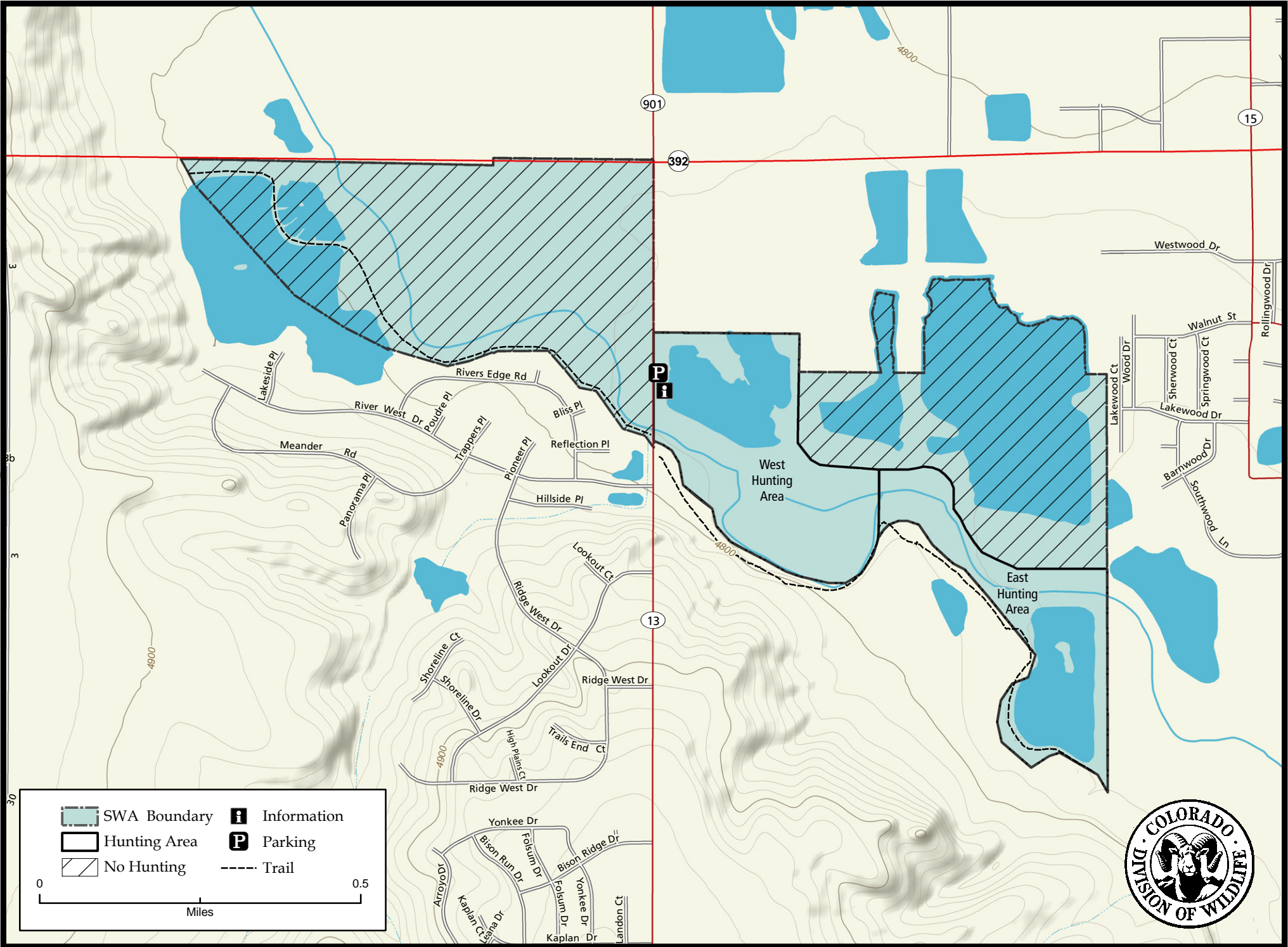


# Frank State Wildlife Area



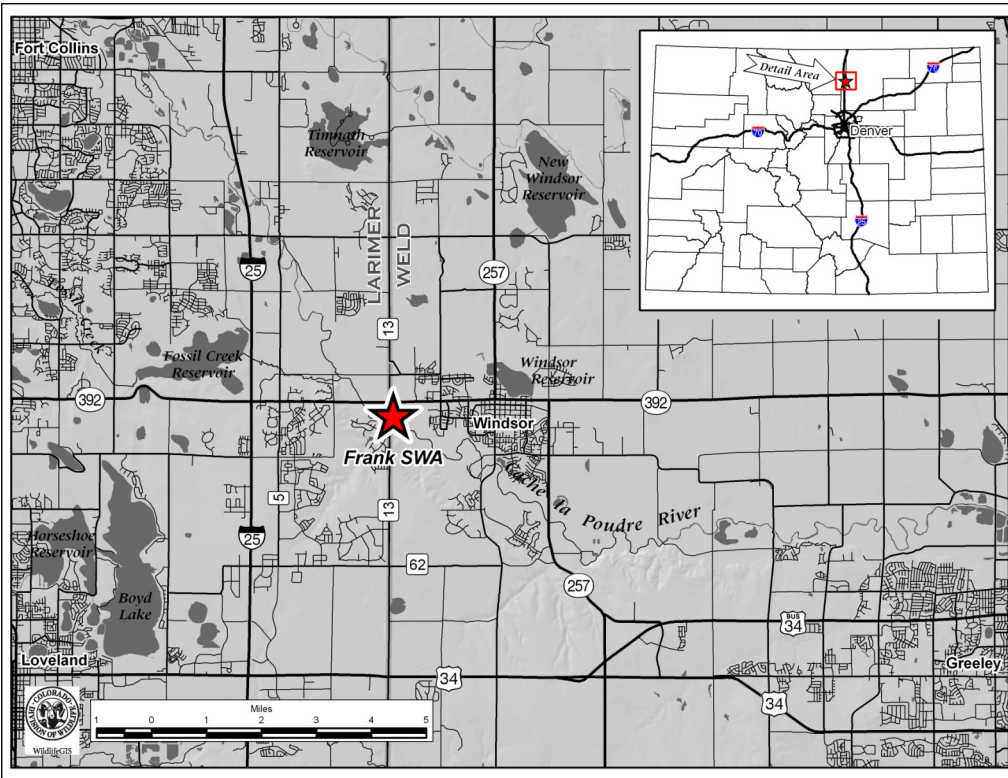
## Frank State Wildlife Area Larimer & Weld Counties

From Interstate 25 at the Windsor exit (Exit 262), go 2.3 miles east on Highway 392 to County Road 13, then 1/2 mile south (right) to the parking area.

### Area Offers:

Hunting: Deer, Rabbit, Squirrel, Pheasant, Dove, Waterfowl

Fishing: Warmwater



**#901.A:** Reservations may be made by calling 1-800-846-9453. Reservations are not accepted more than 14 days in advance of the hunt date, nor after 12:00 noon on the day before the hunt date, or Friday at 12:00 noon for Sundays and holidays falling on Monday. Hunters who wish to cancel a reservation must do so no later than 12:00 noon on the day before the hunt date. Failure to hunt a reserved area without prior cancellation, or follow check station procedures, may cause forfeiture of the privilege to make reservations for the remainder of the hunting season. Hunters are limited to a maximum of one reservation per hunt date and one reservation per phone call. Reservations are not transferable. The individual named on the reservation must be at the property on the day of the hunt and be a licensed hunter for the species to be hunted.

### Regulations:

- A. Discharge of firearms or bows is prohibited, except when hunting.
- B. Discharge of bows is allowed for bowfishing.
- C. Fires are prohibited.
- D. Hunting is prohibited, except with shotguns or bows.
- E. Camping is prohibited.
- F. Boating is prohibited in a manner that creates a white water wake.
- G. During regular duck seasons, all waterfowl and small game hunting on this property is limited to Saturdays, Sundays, Mondays and legal holidays. A reservation is required. Reservations may be made according to #901.A of these regulations. No more than four hunters are allowed per reservation.
- H. Hunters must check out at the designated check station in accordance with the procedures posted at the property.
- I. During regular duck seasons, hunters with reservations may only hunt the area specified on the reservation. 22
- J. Hunting is prohibited west of WCR 13 and in the posted safety zone in the northeast corner of the property.

*In addition to or in place of those restrictions listed in regulation #900 the above listed provisions or restrictions apply (see Chapter 9, <http://wildlife.state.co.us/RulesRegs/Regulations/>).*

*This product is produced and distributed by: Colorado Division of Wildlife - GIS Group, 317 W. Prospect, Fort Collins, CO 80526. Information depicted hereon is for reference purposes only and is compiled from best available sources. Mapped property boundaries may or may not reflect actual legal holdings. Please observe and respect all marked boundaries and signs on the property. Regulations are subject to change - posted regulations at the individual SWA take precedence over any regulations referred to here. For further information, please see regulations brochures available at CDOW offices or [wildlife.state.co.us](http://wildlife.state.co.us).*