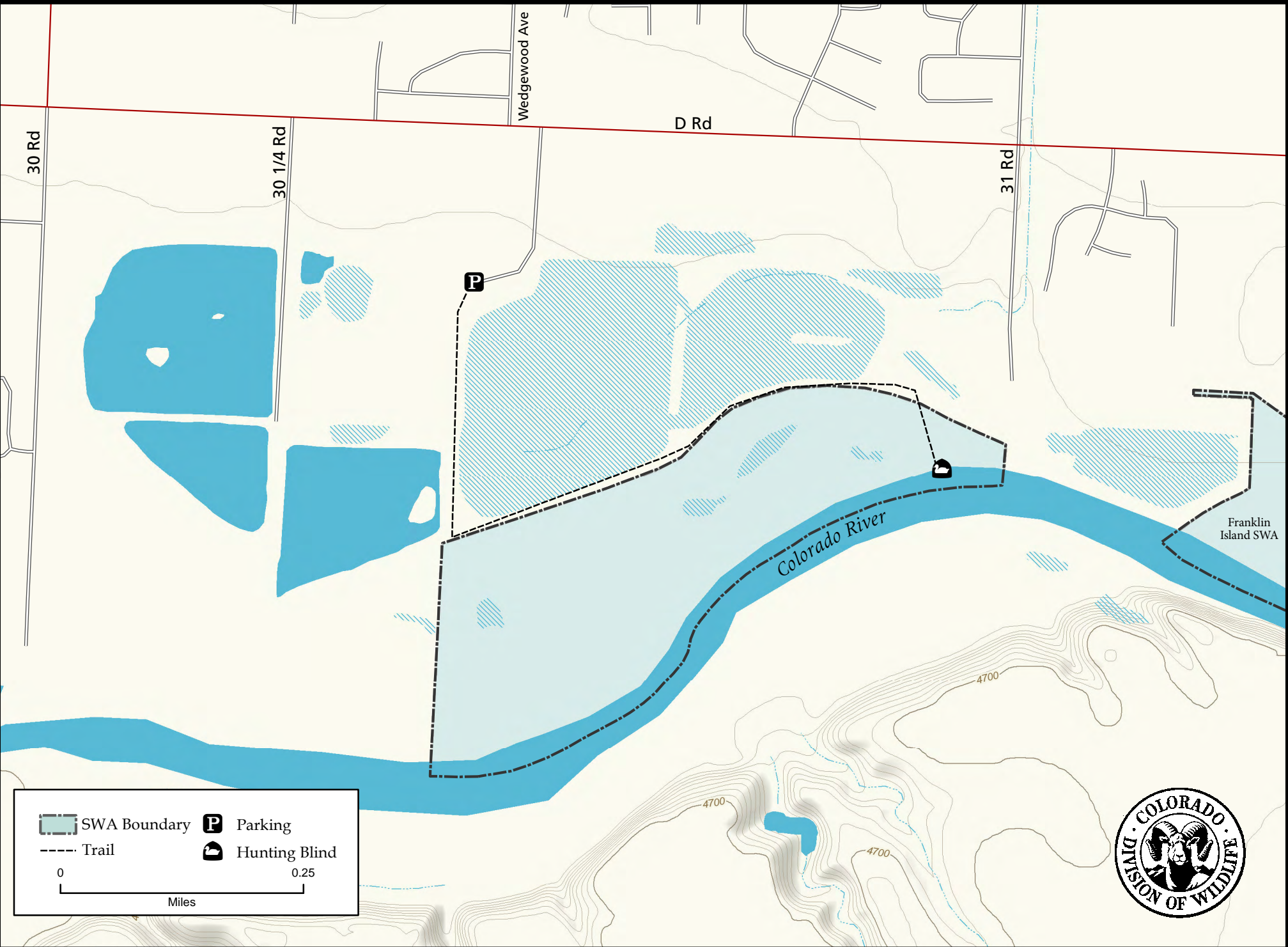


Colorado River Island State Wildlife Area



30 Rd

30 1/4 Rd

Wedgewood Ave

D Rd

31 Rd

P

Hunting Blind


Colorado River


Franklin Island SWA

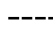
4700


4700

4700

 SWA Boundary

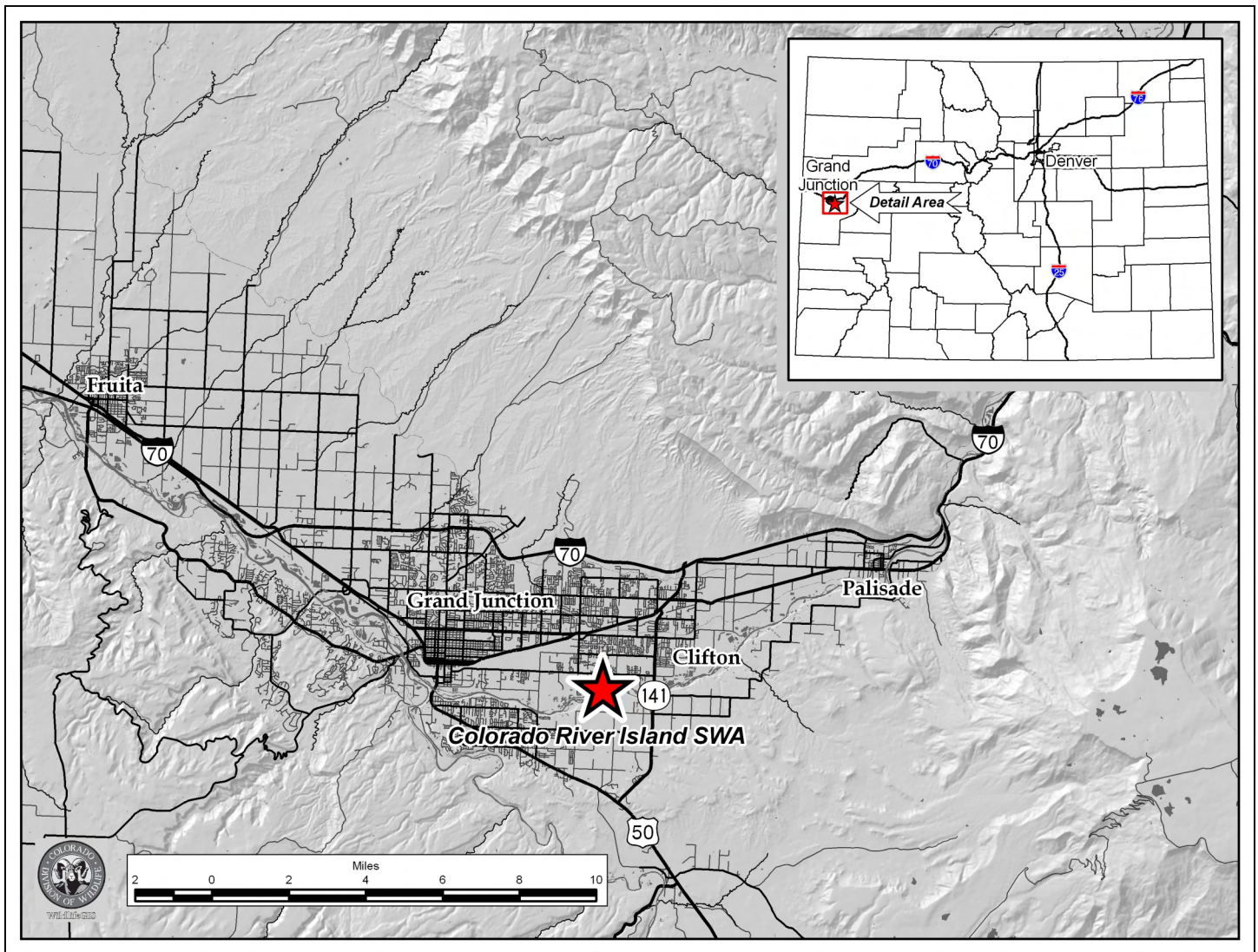
 Parking

 Trail

 Hunting Blind

0 0.25
Miles





Colorado River Island SWA - Mesa County

From I-70 B head south on 30 Rd. Turn left (east) on D road and proceed ½ mile. Turn right into the parking area for the Colorado River Wildlife Area (this parking area is shared with a State Parks trailhead).

Wildlife Area Offers:

Fishing: Warmwater

Hunting: Waterfowl
(GMU 30)

Recreation: Watchable Wildlife

More Information:

CDOW Office (Grand Junction): (970) 255-6100

CDOW Website: <http://wildlife.state.co.us/>

Restrictions:

- A. Camping is prohibited.
- B. Hunting is prohibited, except for waterfowl hunting from designated blinds.
- C. Dogs are prohibited, except as an aid to hunting.

- D. Hunting on this property is by reservation only. Reservations may be made in accordance with #901.A of these regulations. Hunters with reservations may only hunt the hunt area specified on the reservation. Hunters must follow check-in and check-out procedures as posted at the property.
- E. Hunt areas that have not been reserved will be available on a first-come, first-served basis after 5:00 am on each hunting day. Reserved hunt areas unoccupied by 7:00 am will be available on a first-come, first-served basis. However, any hunt area must be yielded at any time upon request of a hunter holding a valid and active reservation for that area.

In addition to or in place of those restrictions listed in regulation #900 the above listed provisions or restrictions apply (see Chapter 9, <http://wildlife.state.co.us/RulesRegs/Regulations/>).

This product is produced and distributed by: Colorado Division of Wildlife - GIS Group, 317 W. Prospect, Fort Collins, CO 80526. Information depicted herein is for reference purposes only and is compiled from best available sources. Mapped property boundaries may or may not reflect actual legal holdings. Please observe and respect all marked boundaries and signs on the property. Regulations are subject to change - posted regulations at the individual SWA take precedence over any regulations referred to here. For further information, please see regulations brochures available at CDOW offices or wildlife.state.co.us.