



Island Lake

FISH SURVEY AND MANAGEMENT INFORMATION

Dan Kowalski, Fish Biologist
Montrose Service Center

General Information: Island Lake provides fishing for rainbow trout, brook trout, splake, and cutthroat trout. Island is the largest lake on the Grand Mesa. It covers 179 surface acres, has a maximum depth of 77 feet, and is open year round to angling.

Location: From Cedaredge, go north 16 miles east on Hwy 65 to the lake.

Primary Management: Coldwater Intensive Management Category 504 (Put and Grow and Put and Take)

Amenities

- Boat Ramps
- Campground
- Restrooms
- Parking Areas
- USFS visitor center is nearby on Hwy 65
- Grand Mesa Lodge offers snacks, drinks, lodging, and fishing tackle

WARNING !!!

Prevent the Spread of Zebra Mussels and other Aquatic Nuisance Species

- Clean, drain, and dry your boat after each use.
- Adult mussels can attach to any surface and can live several days out of water in moist, shaded areas. Microscopic mussel larvae, known as veligers, can be transferred in water contained in live wells, bilge, ballast tanks or minnow buckets

Previous Stocking

2009

Rainbow Trout: 11,352
Splake: 10,001

2008

Rainbow Trout: 12,002
Splake: 10,793

2007

Rainbow Trout: 9,500
Splake: 7,518

2006

Rainbow Trout: 18,998
Splake: 3,001

2005

Rainbow Trout: 16,000
Splake: 3,003

Sportfishing Notes

Rainbow Trout

- Good spots include around the boat ramp and the west shore
- Best fishing times are ice out through July as well as throughout the ice fishing season
- Good lures/baits include olive wooly buggers, Mepps spinners, mealworms, and earthworms

Splake

- Good spots are around the island and throughout the lake in 5-30 ft. depths
- Best fishing times include after ice out and early in the ice fishing season
- Good lures/baits include streamers on sinking fly lines, marabou jigs, and tube jigs tipped with sucker meat

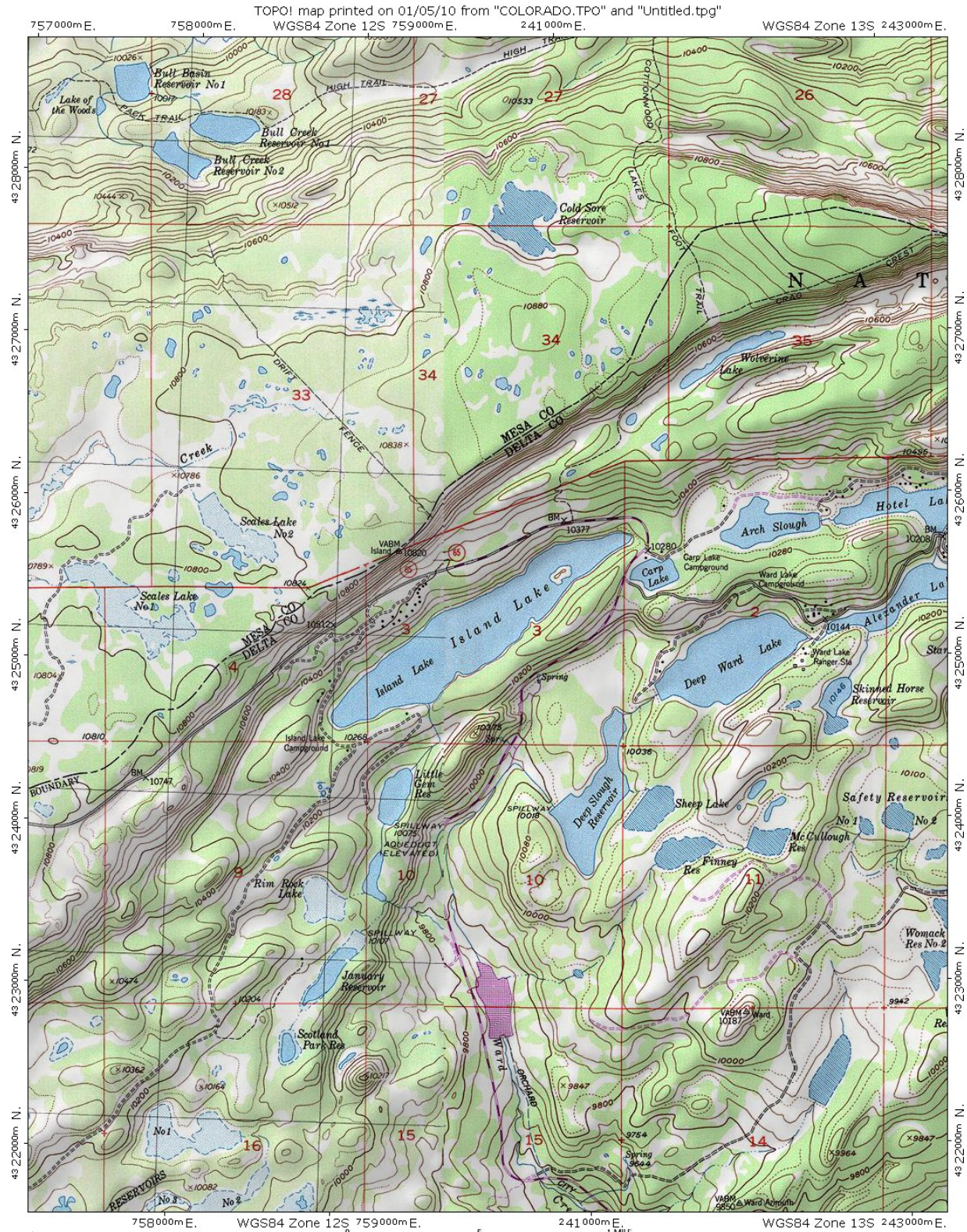


Island Lake

FISH SURVEY AND MANAGEMENT INFORMATION

Dan Kowalski, Fish Biologist

Montrose Service Center



TN/MN
111°



Island Lake

FISH SURVEY DATA
Dan Kowalski, Fish Biologist
Montrose Service Center

Table 1. Species composition and sizes of fish sampled through a gillnet survey in 2008.

Species	% Catch	Mean Length (in)	Length Range (in)
Brook Trout	2	10.4	8.5-13.2
Cutthroat Trout	<1	12.2	10.7-13.9
Rainbow Trout	14	10.7	8.0-13.1
Splake	10	11.4	7.9-17.6
White Sucker	73	10.0	6.3-13.9

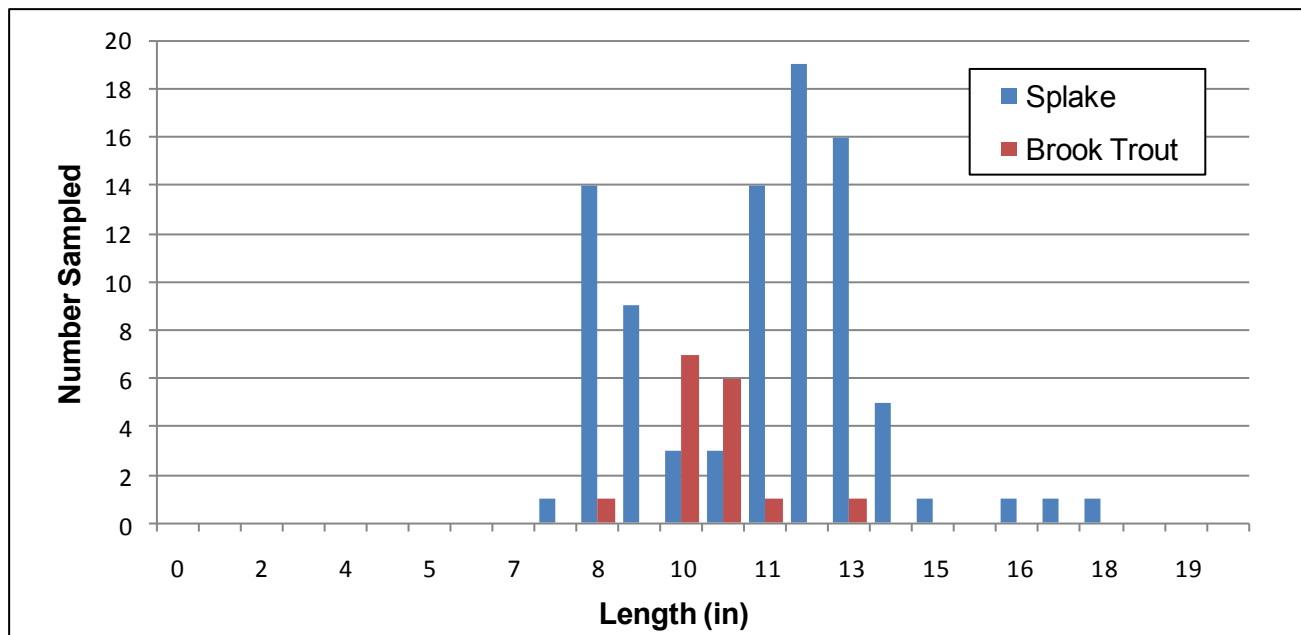


Figure 1. Length frequency histogram for splake and brook trout sampled in Island Lake in 2008.

Management Summary

Trout populations in Island Lake are doing well, rainbow and brook trout numbers have remained steady and splake numbers are increasing. Island produced several state record splake in the 1970's but few large splake have been caught in recent years because they were infrequently stocked and most of the older fish have died out. Splake have been stocked annually since 2004 and those fish are growing well with maximum lengths in 2008 around 18 inches. As more splake grow large enough to take advantage of the abundant white sucker forage, anglers can expect some large fish to be present. The current state record caught in Island in 1976 was 18 lbs. 15 oz. and was 17 years old.