



Upper Gunnison River at Gunnison

FISH SURVEY AND MANAGEMENT INFORMATION

Dan Brauch - Aquatic Biologist (Gunnison)

dan.brauch@state.co.us / 970-641-7070

General Information: The Upper Gunnison River provides excellent trout fishing opportunity for brown, rainbow and cutthroat trout on this 18 mile reach. Kokanee angling is also popular during their fall migration. Public access is generally good for bank, wade or float fishing.

Location: Gunnison county. Blue Mesa inlet 5 miles west of Gunnison on Hwy 50 to Almont, 9 miles north of Gunnison on Hwy 135.

Recreational Management: Colorado Division of Wildlife, Bureau of Land Management, Forest Service, National Park Service

Fishery Management: Coldwater angling

Amenities

- Six miles of public access for shore or wade angling at seven access sites
- Five public boating access points for deployment or pickup of small rafts or boats
- Seasonal restrooms available at USFS Almont Campground, Tomichi Riverway Park, Gunnison Whitewater Park, and McCabes Lane
- Guided wade or float fishing available from several local guide services
- Find additional local fishing info and a list of fishing guides at:
Gunnison - Crested Butte/Activities

Regulations

Special Regulations Section: Almont to Hwy 50

Artificial Flies and Lures Only

Bag and possession for brown trout 2 fish 16" or longer

Catch and release on rainbow trout

Taking kokanee prohibited
August 1-October 31

Standard Regulations Section: Hwy 50 to Blue Mesa Reservoir

Trout bag and possession is 4 fish

Previous Stocking

2009

18,000 fingerling whirling disease resistant rainbow trout stocked

2008

17,000 fingerling whirling disease resistant rainbow trout stocked

Sportfishing Notes

Brown Trout

- Most common species making up about 40-70 percent of angler catch
- Spawn in mid October through November
- Fish with egg patterns during kokanee migration

Rainbow Trout

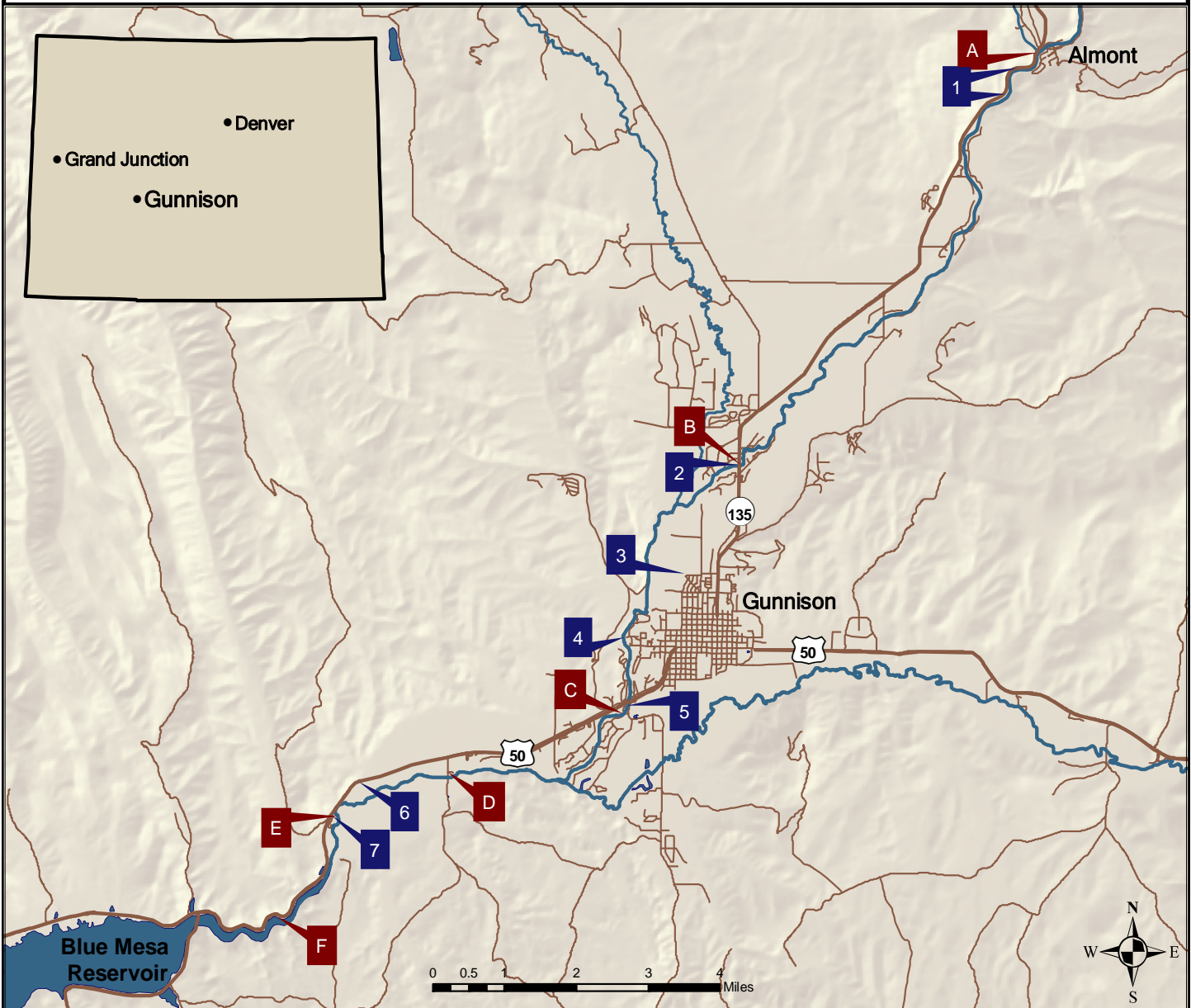
- Make up about 15-50 percent of angler catch
- Spawn in mid April through mid May
- Try Cooper's Ranch and Neversink access points for excellent rainbow fishing

Kokanee Salmon

- Spawning run begins in early August and runs through early November
- Fish nymphs and streamers through kokanee pods for good kokanee action

Gunnison River at Gunnison

MAP AND ACCESS INFORMATION



Bank or Wading Access

- 1—Almont to Almont Campground 1.7 miles
- 2—Redden Access .25 mile, south side of river
- 3—VanTuyl Access 1.5 miles (accessed via a 1/2 mile trail from Char-Mar Park)
- 4—West Tomichi Riverway Park .25 mile
- 5—Gunnison Water Park, .7 mile
- 6, 7—Neversink and Cooper Ranch Access (National Park Service), 2 miles

Boating Access

- A—Almont Hwy 135
- B—North Bridge Hwy 135
- C—Gunnison Whitewater Park HWY 50 (Gunnison County)
- D—McCabes Lane (National Park Service)
- E—Cooper Ranch Access (National Park Service)
- F—Blue Mesa Reservoir (National Park Service)

Gunnison River Almont to County Rd 10

(Special fishing regulation section, flies and lures only)

FISH SAMPLING INFORMATION



Figure 1. Gunnison River below Almont, top of reach sampled in August, 2008. This 4.6 mile reach was sampled with the use of two electrofishing rafts.

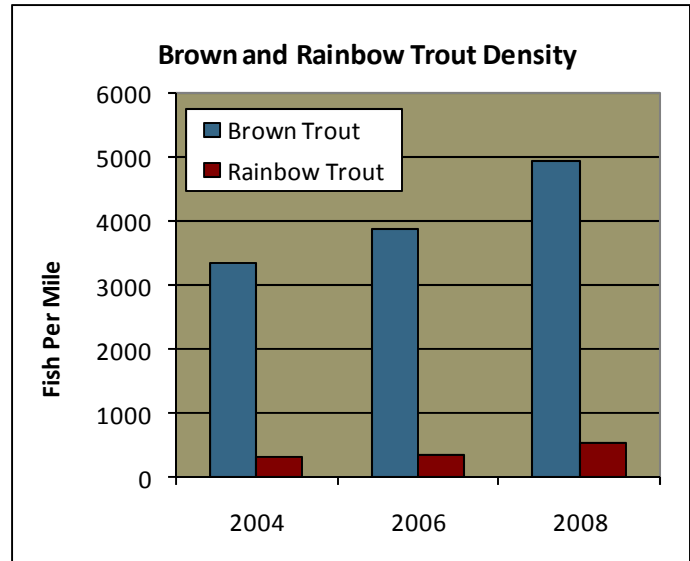


Figure 2. Density estimates for Almont to CR 10, 2004-2008. The density estimate in 2008 for trout over 5 inches was $4,949 \pm 1,351$ fish per mile for browns and 523 ± 276 fish per mile for rainbows.

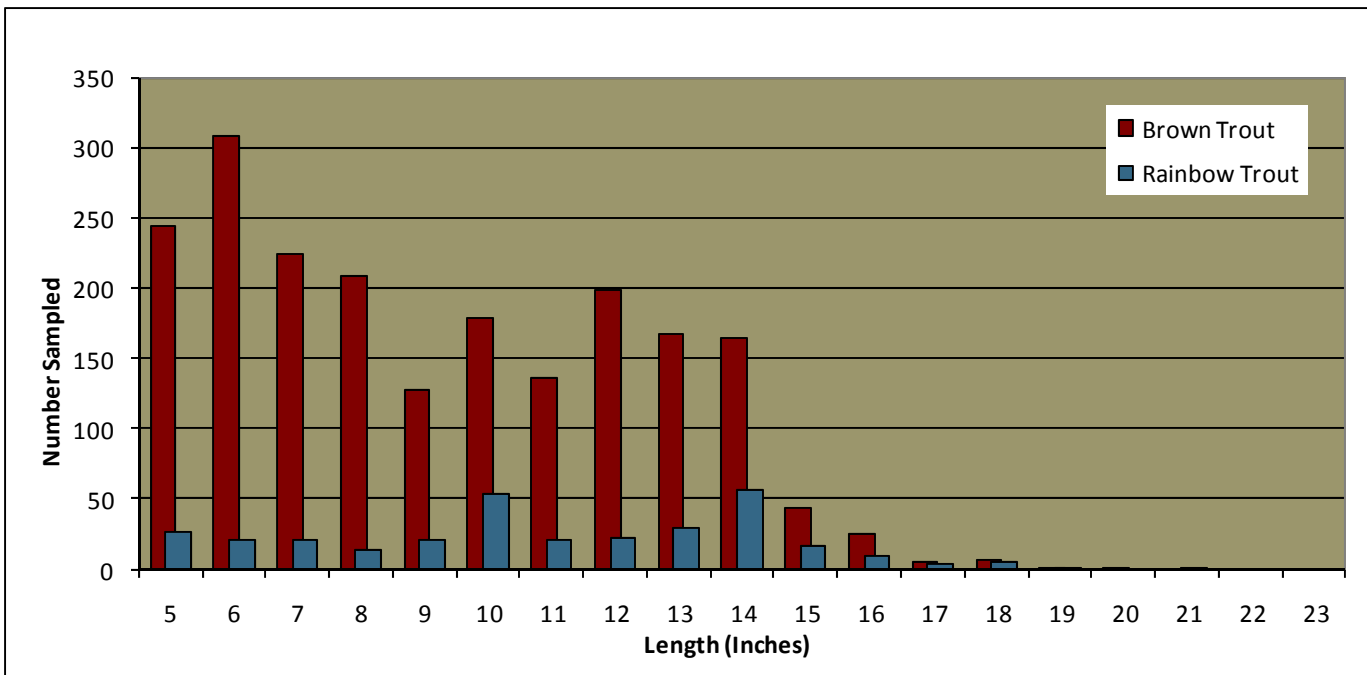


Figure 3. Brown and rainbow trout length-frequency for the Gunnison River from Almont to County Road 10, 2008. There was an estimated 160 ± 44 lbs. per acre of brown trout and 26 ± 14 lbs. per acre of rainbow trout.

Gunnison River below McCabe's Lane

(Standard fishing regulation section)

FISH SAMPLING INFORMATION



Figure 4. Gunnison River at McCabes Lane, top of reach sampled in August, 2008. This 1.8 mile reach was sampled with the use of two electrofishing rafts.

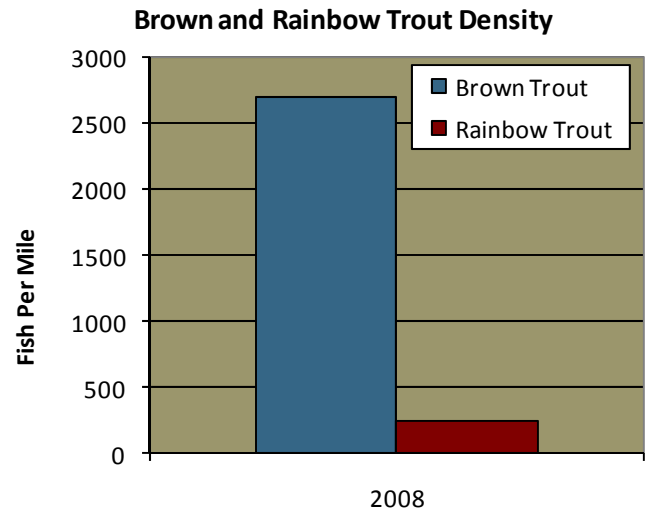


Figure 5. Density estimate for McCabe's Lane to Coopers Ranch, 2008. The density estimate for fish over 5 inches was 2693 ± 2086 fish per mile for browns and 241 ± 254 fish per mile for rainbows.

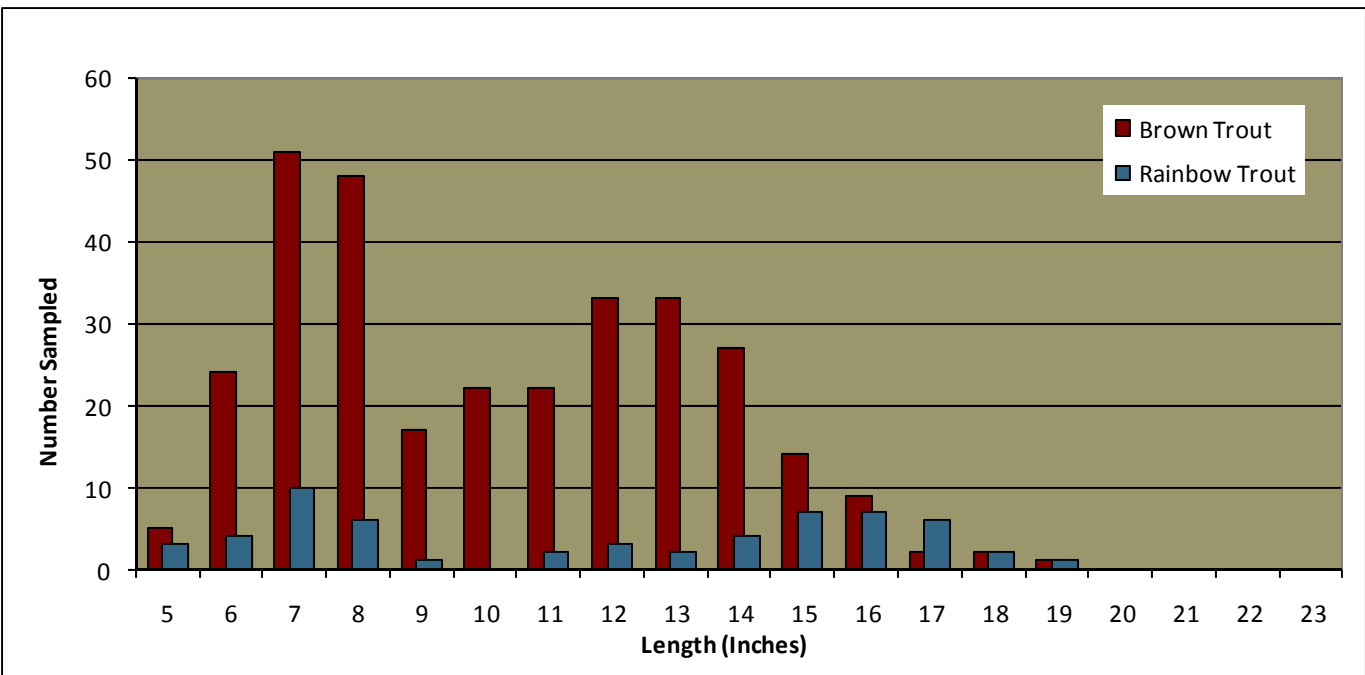


Figure 6. Brown and rainbow trout length-frequency for the Gunnison River from McCabe's Lane to Coopers Ranch, 2008. There was an estimated 91 ± 70 lbs. per acre of brown trout and 14 ± 14 lbs. per acre of rainbow trout. Very poor electrofishing catchability led to wide estimate confidence intervals.

Gunnison River at Gunnison

FISH SAMPLING INFORMATION

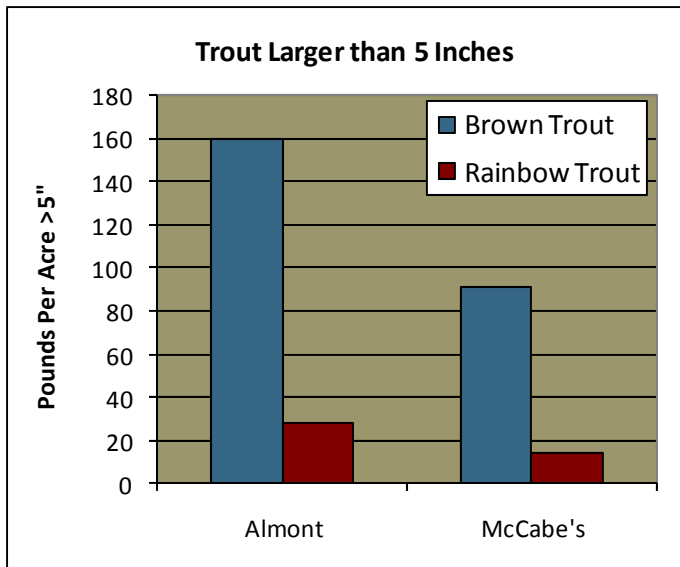


Figure 7. Biomass estimates for brown and rainbow trout one year old and older from two reaches of the Gunnison River 2008.

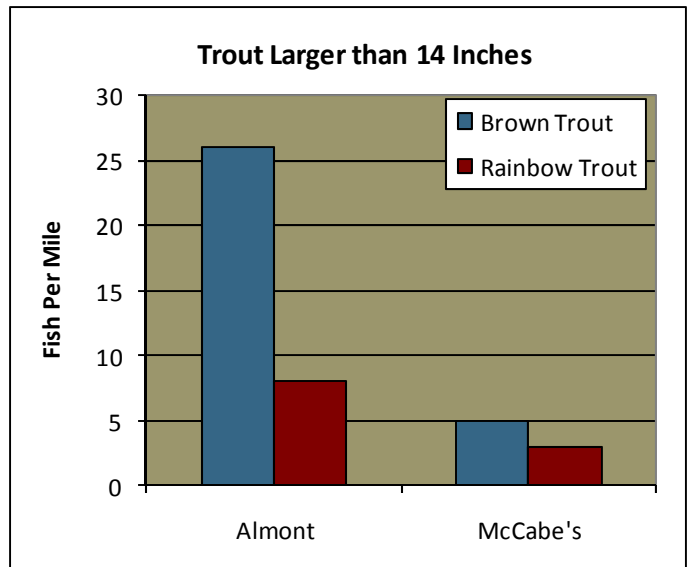


Figure 8. Density estimates for quality sized brown and rainbow trout from two reaches of the Gunnison River 2008.

Management Notes — Fish populations in the Gunnison River at Gunnison have benefitted from good year-round flow patterns, particularly in the 2003-2007 time period. Wild brown trout experienced excellent survival and growth in those years, and overall trout density reached a level of over 5,000 trout per mile in 2008 in the Almont to County Road 10 section. Rainbow trout in this reach are supplemented through the stocking of sub-catchable rainbow trout by the Colorado Division of Wildlife as well as private stocking of catchable rainbow and cutthroat trout. Lower sections of the Gunnison River just above Blue Mesa Reservoir often see increased angler catch of rainbow trout which often run out of the reservoir. This section of the Gunnison River has received whirling disease resistant rainbow trout in 2008 and 2009. It is hoped that stocking of resistant rainbows will result in restored rainbow trout natural reproduction and recruitment in this section of the Gunnison River. The Gunnison River provides excellent opportunities for both wade and boat fishing. Most sections of the Gunnison River are good for float fishing (Class I and II at most flows). Several small rapids are found in the section of the Gunnison River just below Hwy 50 within the Gunnison Whitewater Park and through a private irrigation diversion just downstream. These rapids can flip boats at higher flows.