

Animas River, Durango

FISH SURVEY AND MANAGEMENT INFORMATION

Jim White - Aquatic Biologist

Durango Service Center, j.white@state.co.us, (970) 375-6712

General Information: The Animas River provides “Gold Medal” trout fishing opportunities for primarily brown and rainbow trout in the heart of Durango. Public access is very good for bank, wade, or float fishing on this 7 mile reach of river.

Location: La Plata County. Reach starts at approximately 32nd Street Bridge in Durango and extends downstream to the Rivera Crossing Bridge at Dallabetta City Park. [Animas River Map and Access Information](#)

Primary Management: Coldwater angling

Survey Data: [Angler Use and Fish Sampling Info](#)

Amenities

- Seven miles of public access for shore or wade angling at numerous access sites along the Animas Riverwalk
- Four public boating access points for deployment or pickup of small rafts or boats
- Seasonal restrooms available at Schneider Park
- Guided wade or float fishing available from several local guide services.
- For additional info about local amenities and services, visit the Durango web site at: www.durangogov.org

Regulations

32nd Street Bridge to Lightner Creek

Standard bag limits (4 trout per day) are in effect in this reach. Use of bait (see definition in regulation brochure) is permissible.

Lightner Creek confluence to Rivera Crossing Bridge

Designated Gold Medal reach. Artificial Flies and Lures only. Trout bag limit is 2 fish 16 inches or longer.

Previous Stocking

2008

Rainbow Trout, 2,500 10 inch trout and 20,000 fingerlings

Brown Trout, 48,416 fingerlings

Colorado cutthroat trout, 44,222 fingerlings

2007

Rainbow Trout, 2,880 10 inch and 32,810 fingerlings

Brown Trout, 20,144 fingerlings

Sportfishing Notes

Rainbow Trout

- Historically, most common species making up about 70 percent of angler catch
- Spawn in mid March to mid-April

Brown Trout

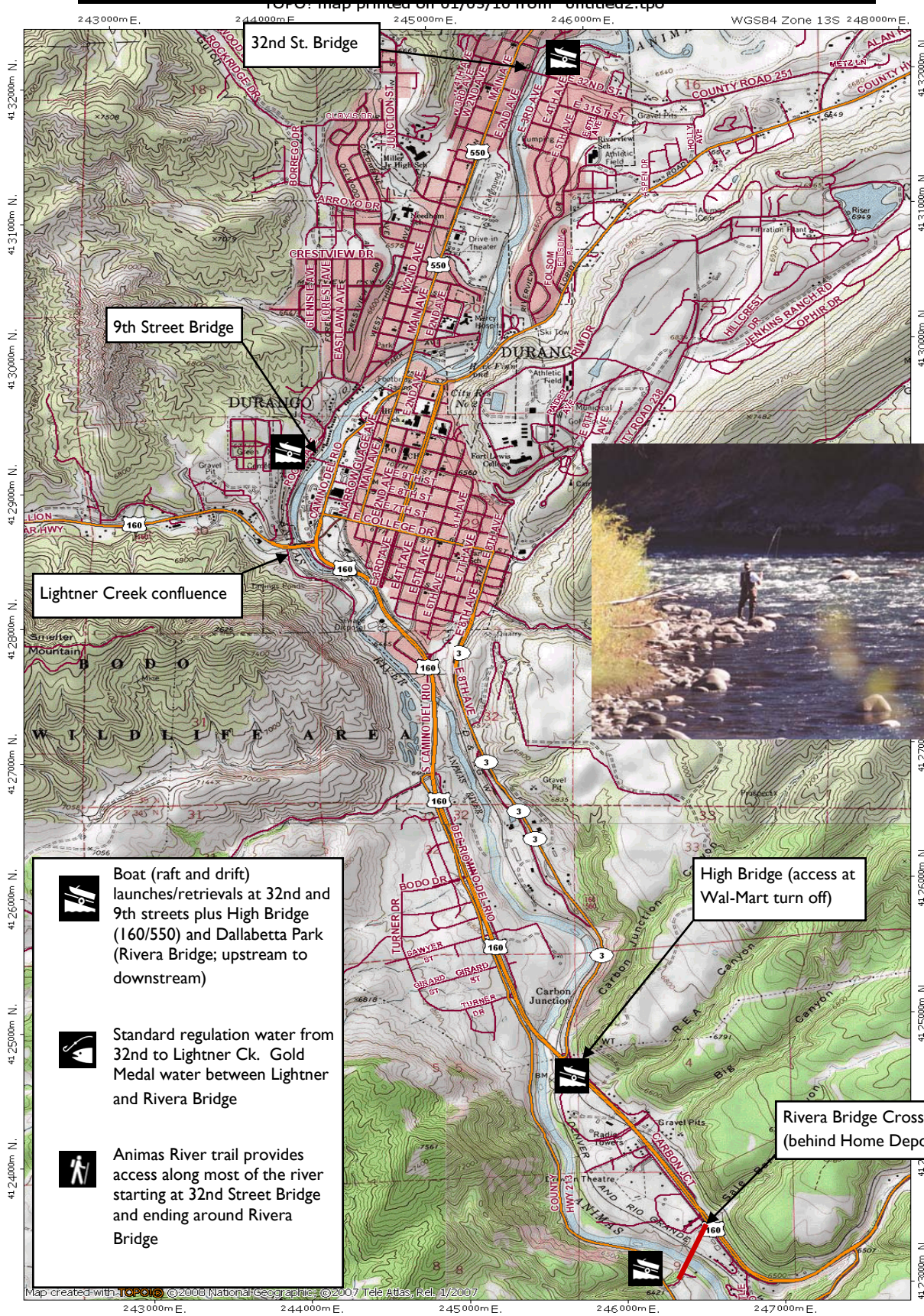
- Make up about 25 percent of angler catch
- Spawn in mid October through mid November




Cutthroat Trout

Make up about 5% of anglers catch.

Spawn in mid-March to early April

Animas River in Durango

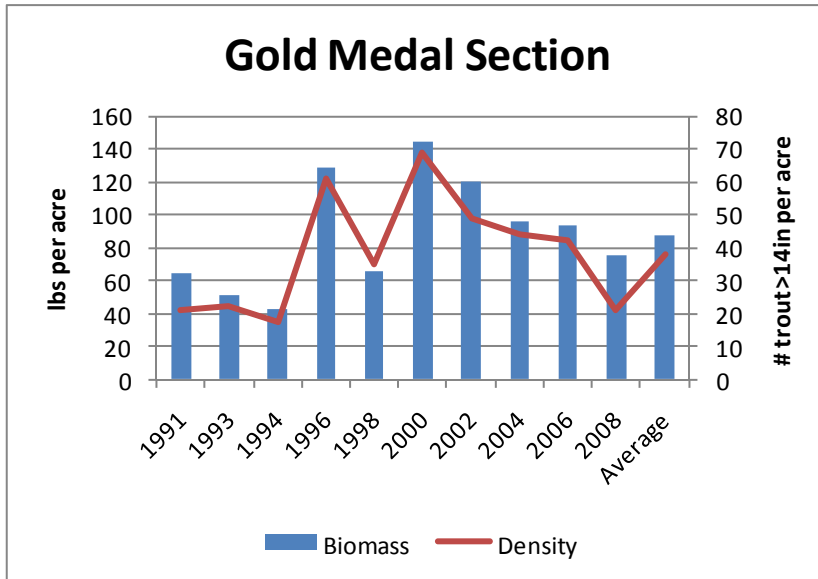


-  Boat (raft and drift) launches/retrievals at 32nd and 9th streets plus High Bridge (160/550) and Dallabetta Park (Rivera Bridge; upstream to downstream)
-  Standard regulation water from 32nd to Lightner Ck. Gold Medal water between Lightner and Rivera Bridge
-  Animas River trail provides access along most of the river starting at 32nd Street Bridge and ending around Rivera Bridge

Animas River in Durango

ANGLER USE AND FISH SAMPLING INFORMATION

Jim White— Aquatic Biologist
Durango Service Center



Minimum standard for Gold Medal designation is trout biomass must be >60 lbs/ac and contain 12 fish >14 inches/ac (*see graph*)

Standard Reach anglers catch averages about 0.6 fish per hour while Gold Medal anglers averaged about 0.7 fish/hr (*1982-1997 angler survey data*)

280 fishermen / mile / month

83 % of anglers strongly satisfied with fishing trip

67 % of anglers satisfied with number of fish caught

Population Estimates per Mile (2008— Standard):

Brown trout	417
	112 > 14"
Rainbow trout	755
	43 > 14"

Population Estimates per Mile (2008— Gold Medal):

Brown trout	246
	137 > 14"
Rainbow trout	641
	125 > 14"

Management Notes — Fish populations in the Animas River are primarily sustained though annual stocking of fingerling rainbow and brown trout. Stocking is necessary because dissolved heavy metals from past mining operations occurring primarily in Silverton limit the survival of trout eggs. Recently, the CDOW has started stocking a whirling disease resistant strain of rainbow trout with the goal of restoring or enhancing this component of the fishery. Larger “sub-catchable” whirling disease trout are stocked in the lower portion of the Gold Medal reach as mitigation for the Animas La Plata project which pumps water up to Lake Nighthorse at Santa Rita Park.