



# Nee Gronde Reservoir

## FISH SURVEY AND MANAGEMENT INFORMATION

Jim Ramsay - Aquatic Biologist, Lamar Service Center

2500 S. Main St. Lamar CO 81052 (719)336-6607

email: [jim.ramsay@state.co.us](mailto:jim.ramsay@state.co.us)

**General Information:** Nee Gronde suffered a devastating fish kill after the winter of 2009 –2010. Extended periods of ice-over with no fresh inflows caused the lake to lose the oxygen content of the water. The majority of the fish perished. Efforts are underway to rebuild this popular fishery. A full complement of fish were stocked in 2010 as well as some adult brood fish to provide immediate angling opportunity. An immediate need at Nee Gronde is some fresh water to increase lake levels and improve water quality.

**Location:** Kiowa County. Travel south of Eads, CO on US Hwy 287 15 miles to Reservoir

**Size:** 1400 surface acres (variable), Average Depth 10-15 ft.

**Management:** Amity Irrigation Co., and BLM. Recreation managed by CDOW. **Annual Survey Data:** P2

<u>Amenities and General Info.</u>	<u>Previous Stocking</u>	<u>Sportfishing Notes</u>
<ul style="list-style-type: none"> <li>• 1 state-maintained boat ramp with floating pier at County Rd. C. (<b>currently out-of-service</b>)</li> <li>• Primitive Camping</li> <li>• Restrooms available</li> <li>• Trot lines and jug fishing permitted.</li> </ul>	<b><u>2010</u></b>	<u>Wiper</u>
	Black Crappie 6”	<ul style="list-style-type: none"> <li>• Can be found throughout the lake. Prefer areas near schooling shad.</li> <li>• Best months are May- June &amp; September - October</li> <li>• Best lures are shad imitating crank baits, plastic jigs, and shiny spinners. Effective baits include worms, minnows, shrimp, and crawdads.</li> </ul>
	Black Crappie 1.5”	
	Bluegill 3.25”	
	Bluegill 1.2”	
	Channel Catfish 29.5”	
	Channel Catfish 2.75”	
	Saugeye 0.25”	
	Smallmouth Bass 11.50”	
	Smallmouth Bass 3.20”	
Wiper 1.6”		
Wiper 0.20”		
<p style="text-align: center;"><b><u>Regulations</u></b></p> <ul style="list-style-type: none"> <li>• NO ATV’s or OHV’s allowed on the wildlife area.</li> <li>• Closures may exist around endangered bird nesting areas.</li> <li>• Seasonal closures for water-fowl hunting season. Limited access: Nov. 1 - Mar. 31 annually.</li> <li>• Special limits for wall-eye/saugeye apply: daily bag limit 5, possession limit 10 (all fish must be 15” or greater).</li> </ul>	<b><u>2009</u></b>	<u>Saugeye</u>
	Channel Catfish 2.4”	<ul style="list-style-type: none"> <li>• Prefer areas with submerged structure, aquatic vegetation, or near schooling bait fish.</li> <li>• Best months are May &amp; June</li> <li>• Effective lures are walleye type crank baits, minnow imitations, and jigs tipped with bait</li> </ul>
	Saugeye 0.2”	
	Wiper 0.2”	
	<u>Smallmouth Bass</u>	<ul style="list-style-type: none"> <li>• Prefer areas of submerged trees around edge of lake.</li> <li>• Best months are Spring/Early Summer (April—June).</li> <li>• Effective lures: tube or twister jigs, jerk baits, or shallow crank baits.</li> </ul>

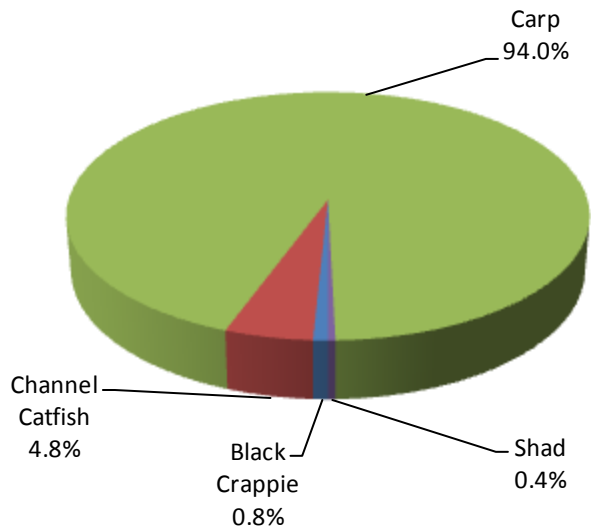


# Nee Gronde Reservoir

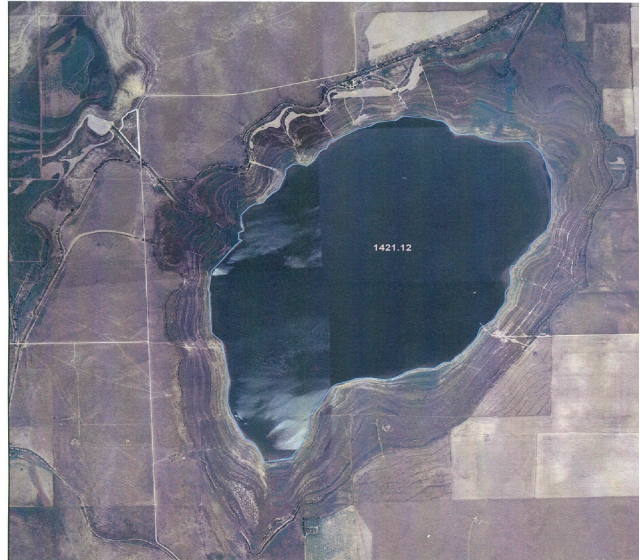
2010 LAKE SURVEY DATA

Jim Ramsay - Aquatic Biologist

Lamar Service Center



PERCENT RELATIVE ABUNDANCE



2009 Aerial Photo of Nee Gronde - About 1400 Surface Acres

## LENGTH FREQUENCY TABLE

INCHES	4	5	6	7	8	9	10	11	12	13	14	15	16	17	18	19	20	21	22	23	24	25	26	27	T	
CARP			4	2		5	42	35	13																	101
CRAPPIE	2																									2
C. CATFISH																					4			8		12
G. SHAD												1														1
STRIPED BASS																										
WALLEYE																										
WHITE BASS																										
WIPER																										
Y. PERCH																										
CENTIMETERS	10	13	15	18	20	23	25	28	30	33	35	38	40	43	45	48	50	53	55	58	60	63	65	68		

## RELATIVE WEIGHT TABLE

SPECIES	00	01	02	03	04	05	06	07	08	09	10	11 YR. AVG.
C. CATFISH	103.1	107.3	96.9	101.1	90.1	86.7	95.4	87.0	83.2	88.2	104.3	94.8
G. SHAD	91.9	103.7	101.1	98.6	98.1	90.2	89.3	86.2	92.8	89.6	110.8	95.7
SAUGEYE	102.8	99.8	100.8	98.5	92.0	90.6	98.6	92.0	91.9	95.2	---	96.2
WHITE BASS	112.1	108.4	102.6	110.0	96.3	91.5	97.6	97.9	99.4	97.1	---	101.3
WIPER	101.7	94.1	97.7	90.8	88.4	89.4	89.8	94.9	92.8	89.8	---	92.9
SM BASS	---	---	---	---	---	---	---	90.4	82.0	---	---	86.2



# **Nee Gronde Reservoir**

## **2011 FISHING FORECAST**

**Jim Ramsay - Aquatic Biologist**

**Lamar Service Center**

2011 will be a rebuilding year. Nee Gronde is still a good sized lake (about 1200 acres) with water depths of over 20 ft. in many areas. Large numbers of quality game fish have existed in this lake, however, the only remnants from the 2009 fishery were a few carp and catfish. Efforts began in 2010 to rebuild the fishery. The shad forage base is the most important part of the rebuilding effort. Numerous adult and juvenile shad were stocked throughout 2010. Many adult sized game fish were also stocked in an effort to provide immediate angling opportunity and to jump-start the rebuilding process (see page 1). We hope to see substantial progress in 2011. A major factor that will have a huge impact on the Nee Gronde fishery is water availability. Efforts are being made by CDOW personnel to purchase large amounts of water for Nee Gronde. If successful, Nee Gronde should make a great comeback.