



# Horseshoe Reservoir

## FISH SURVEY AND MANAGEMENT DATA

Michelle McGree - Aquatic Biologist (Pueblo)  
michelle.mcgree@state.co.us / 719-561-5312

**General Information:** Horseshoe Reservoir, approximately 160 acres in size, offers good fishing for bass, catfish, bluegill, sauger, crappie and rainbow trout. The reservoir is contained within Lathrop State Park.

For park hours, fees, and other information: <http://parks.state.co.us/Parks/lathrop>

**Location:** Huerfano county. Go 5 miles W of Walsenburg on HWY 160 to the entrances of the park.

**Recreational Management:** Division of Wildlife (719-561-5300) or Colorado State Parks (719-561-9320)

**Fishery Management:** Warm and Cold water species. **Annual Survey Data:** (see page 2)

### Amenities

- Boat Ramps (2)
- Picnic Areas
- Restrooms

### Regulations

- Min. size for largemouth, smallmouth and spotted bass is 15" total length.
- Tiger muskie has a bag and possession limit of 1, over 36 inches in length.
- Bag and possession limits for all fish species are listed under the Arkansas drainage in the regulations brochure at: <http://wildlife.state.co.us/RulesRegs/RegulationsBrochures/>

### Special Information

- Eurasian Milfoil is found here, and is a noxious weed in the State of Colorado. All anglers should clean all equipment after use, as milfoil can spread by transporting pieces of the plant to other waters. All boats will be inspected prior entering the water, and boat ramp hours are limited.

### Previous Stocking

#### 2010

Black Crappie  
Bluegill  
Channel Catfish  
Cuttbow  
Rainbow Trout

#### 2009

Black Crappie  
Bluegill  
Channel Catfish  
Rainbow Trout

#### 2008

Bluegill  
Rainbow Trout  
Channel Catfish  
Sauger  
Tiger Muskie

#### 2007

Black Crappie  
Bluegill  
Rainbow Trout

### Sportfishing Notes

#### Trout

- Horseshoe is stocked heavily with "catchable" trout in the spring and fall. Some of these fish will put on several inches of growth through the season and anglers can expect good catches of these fish during most of the ice free season.

#### Catfish

- Horseshoe has a low density, high quality channel catfish population. Anglers do not catch a lot of these fish, but can see fish in the 20 pound class.

#### Bass

- Horseshoe contains both Largemouth and Smallmouth bass. Many techniques are used to catch these fish and all can be caught through all of the ice free season.

#### Tiger Muskie

- Horseshoe does yield some trophy tiger muskie to anglers with the patience to work for them.

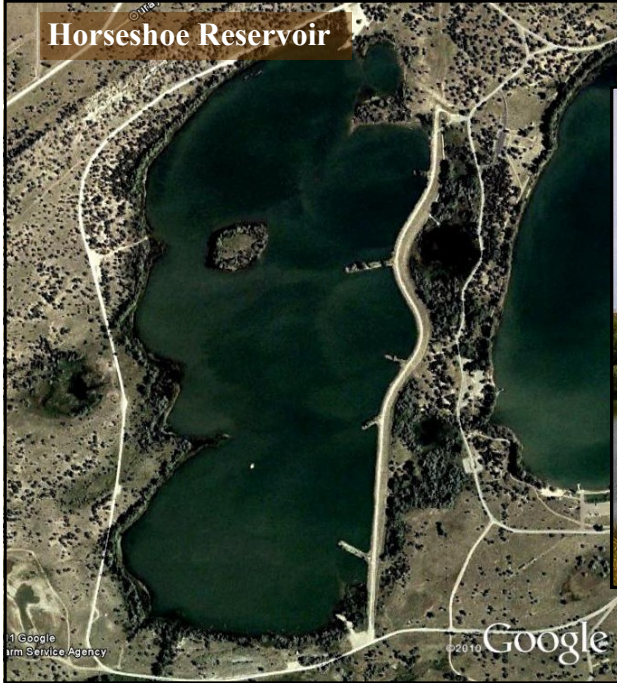
### Fish Consumption Advisory

The Colorado Department of Health has posted a Fish Consumption Advisory for smallmouth bass and sauger on Horseshoe Reservoir. Advisories are posted at the reservoir or can be found at the Colorado Department of Health web page: <http://www.cdph.state.co.us/wq/FishCon/HorseshoeADVISORY.pdf>



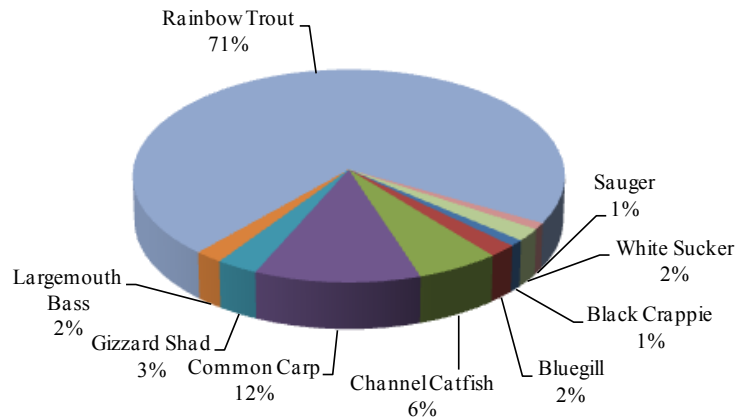
# HORSESHOE RESERVOIR

-FISHERIES SURVEYS  
-2011 FORECAST



Jonathan D Kelly; <http://parks.state.co.us/Parks/Lathrop/Nature/Pages/LathropNature.aspx>

## 2010 Gillnet Survey



	# caught	#/net	Length (inches)		Weight (lbs)	
			Average	(Range)	Average	(Range)
Black Crappie	1	0.3	5.4	(5.4-5.4)	0.1	(0.1-0.1)
Bluegill	3	0.8	3.8	(3.7-4.1)	0.1	(0.1-0.1)
Channel Catfish	10	2.5	14.7	(9.1-19.7)	1.1	(0.2-2.8)
Common Carp	21	5.3	20.0	(17.3-24.6)	3.7	(2.5-6.6)
Gizzard Shad	6	1.5	16.1	(15.4-17.1)	1.9	(1.5-2.2)
Largemouth Bass	3	0.8	10.2	(5.0-14.8)	0.8	(0.1-1.7)
Rainbow Trout	130	32.5	10.9	(8.3-15.7)	0.4	(0.2-1.5)
Sauger	2	0.5	18.1	(17.1-19.0)	1.7	(1.4-1.9)
White Sucker	3	0.8	15.7	(14.4-16.9)	1.5	(1.2-1.8)



# HORSESHOE RESERVOIR

-FISHERIES SURVEYS  
-2011 FORECAST

## 2011 Fishing Forecast

### SAUGER

Horseshoe offers a rare opportunity in the State of Colorado to catch “pure” sauger. The reservoir contains a low density, high quality population of sauger and anglers have the opportunity to take a new state record fish. All sauger caught in 2010 gill nets were between 17 and 20 inches in length (Figure 1). Sauger prefer rocky substrate and can be caught using a variety of bass or walleye techniques. Anglers need to be aware of the Department of Health Consumption Advisory for sauger in Horseshoe due to mercury contamination.

### CHANNEL CATFISH

Horseshoe contains only channel catfish and the population is relatively small but based on the catch in 2010 gillnets, many of the fish are above 13 inches in length (Figure 1). Anglers with the persistence to catch catfish can catch low numbers of high quality fish. Common catfish techniques are all successful.

### BLACK CRAPPIE

Crappie have been stocked as approximately 1 inch fish into Horseshoe Reservoir in 2007, 2009, and 2010. They are being caught in gillnets as adult fish (Figure 1) and their population should be on the rise. Anglers who are willing to work for them should see some great catches in 2011.

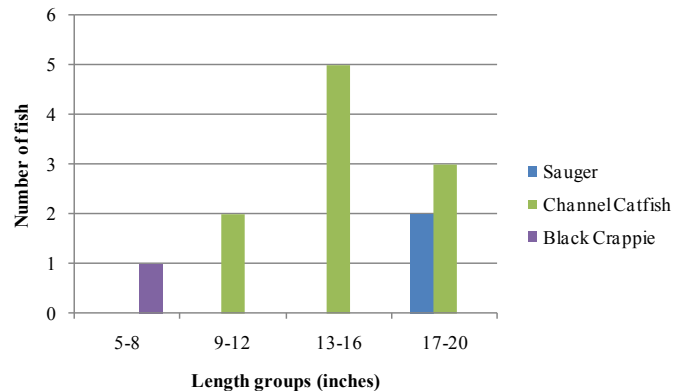


Figure 1. Number and size of fish caught in 2010 gillnets on Horseshoe Reservoir, October 2010.

### TROUT

Trout fishing is a staple for the reservoir and trout were heavily stocked as 10 inch fish from March to October in 2010. Most of the gill net catch was fish approximately 10 inches in length, although some larger fish are in the reservoir (Figure 2). Trout fishing should continue to be good in 2011. They can be caught from shore as well as from boats casting or trolling.

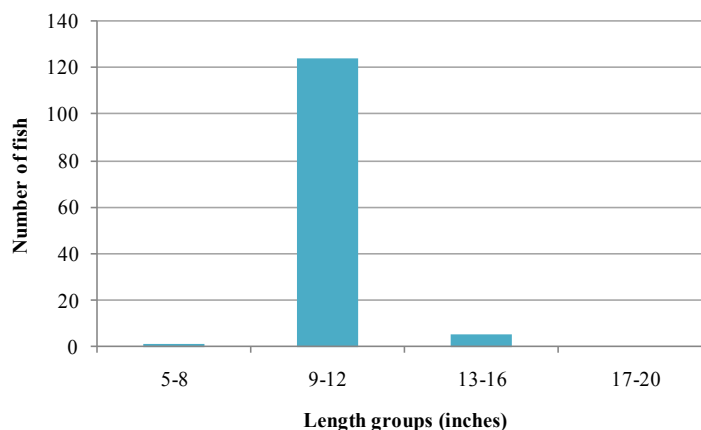


Figure 2. Number and size of trout caught in 2010 gillnets on Horseshoe Reservoir, October 2010.

### OTHER SPECIES

Horseshoe has a very good fishery for largemouth and smallmouth bass. Numbers are high with lots of small fish. Some largemouth have been caught in the 6 pound range and smallmouth in the 3 pound range are occasionally caught.

## 2010 MASTER ANGLER AWARDS

Scott Chase

channel catfish

31 ½”

Horseshoe Lake

October 2010