



Milavec Reservoir

FISH SURVEY AND MANAGEMENT DATA

Benjamin Swigle - Aquatic Biologist (Fort Collins/Boulder)
ben.swigle@state.co.us / 970-472-4364

General Information: Milavec reservoir (formally Firestone Reservoir) is a 80 acre impoundment offering great shoreline access. Anglers can expect to catch bass, crappie, bluegill, catfish, northern pike, and catchable trout. Belly boats and carry-on water craft (non-motorized) offer anglers additional access.

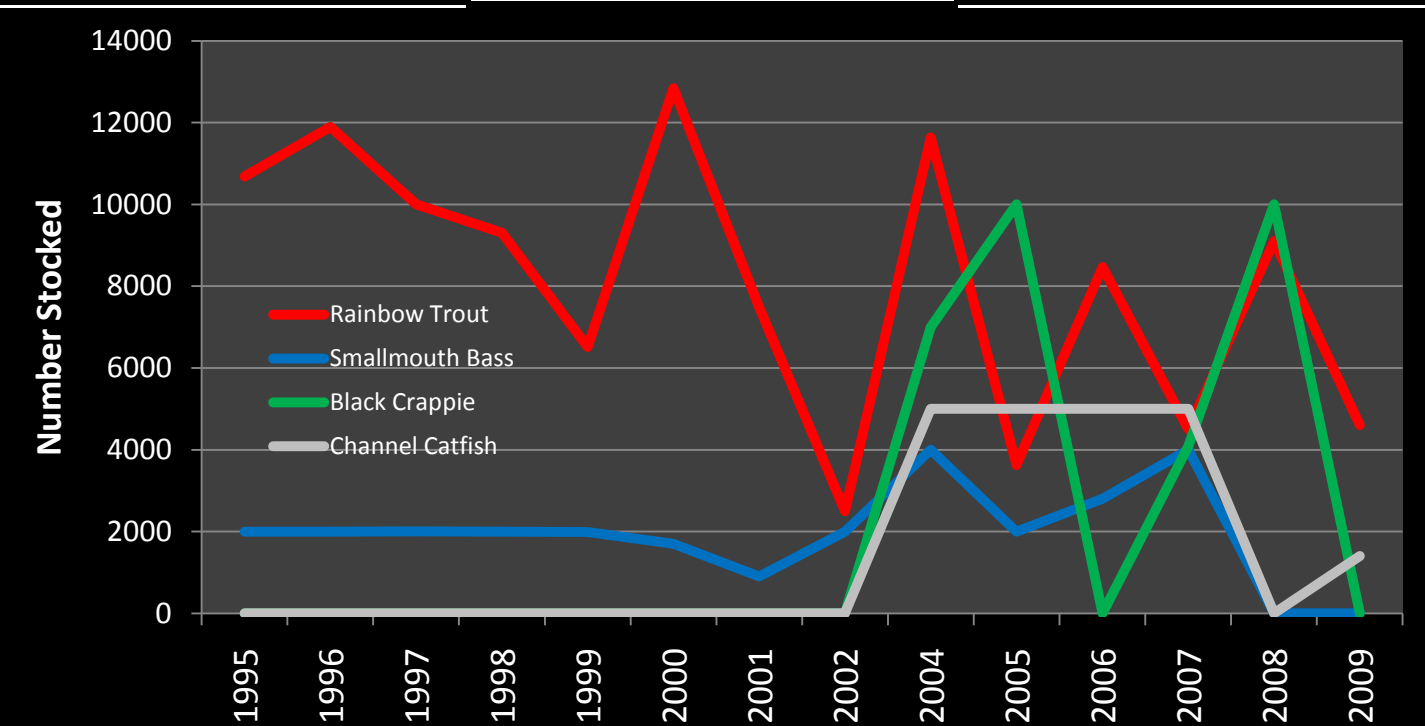
Location: 2 miles north of HWY 52 on Weld County Road 13, or Northwest of Frederick.

Fishery Management: Warmwater Angling with seasonal trout

Recreational Management: City of Frederick

Purchase a Fishing License: <http://wildlife.state.co.us/ShopDOW/AppsAndLicenses/>

<u>Amenities</u>	<u>Previous Stocking</u>	<u>Sportfishing Notes</u>
<ul style="list-style-type: none"> •Primitive restroom •Good shoreline access with walking trail 	<p style="text-align: center;"><u>2011</u></p> Black Crappie Channel Catfish Largemouth Bass Northern Pike Rainbow Trout Walleye	<p style="text-align: center;"><u>Rainbow Trout</u></p> <ul style="list-style-type: none"> •Spinners, bait (powerbait & nightcrawlers), and flies are all productive tools. Fishing is typically good April-June; and after September.
<p style="text-align: center;"><u>Regulations</u></p> <ul style="list-style-type: none"> •Daily trout limit is 4. See regulation brochure for more information: http://wildlife.state.co.us/SiteCollectionDocuments/DOW/RulesRegs/Brochure/fishing.pdf •Non-motorized carry-on boats, and multi-chambered belly boats are allowed. •No ice fishing. 	<p style="text-align: center;"><u>2010</u></p> Black Crappie Bluegill Grass Carp (Sterile) Channel Catfish Largemouth Bass Rainbow Trout	<ul style="list-style-type: none"> •At times the rainbows are so aggressive they often deep hook themselves while attacking bait. Anglers who encounter a deep hooked trout are highly encouraged to keep these fish. Trout hooked in this fashion will not survive.
	<p style="text-align: center;"><u>2009</u></p> Channel Catfish Rainbow Trout Northern Pike Saugeye Yellow Perch	
	<p style="text-align: center;"><u>2008</u></p> Black Crappie Rainbow Trout Northern Pike Saugeye	
	<p style="text-align: center;"><u>2007</u></p> Black Crappie Channel Catfish Smallmouth Bass Rainbow Trout	

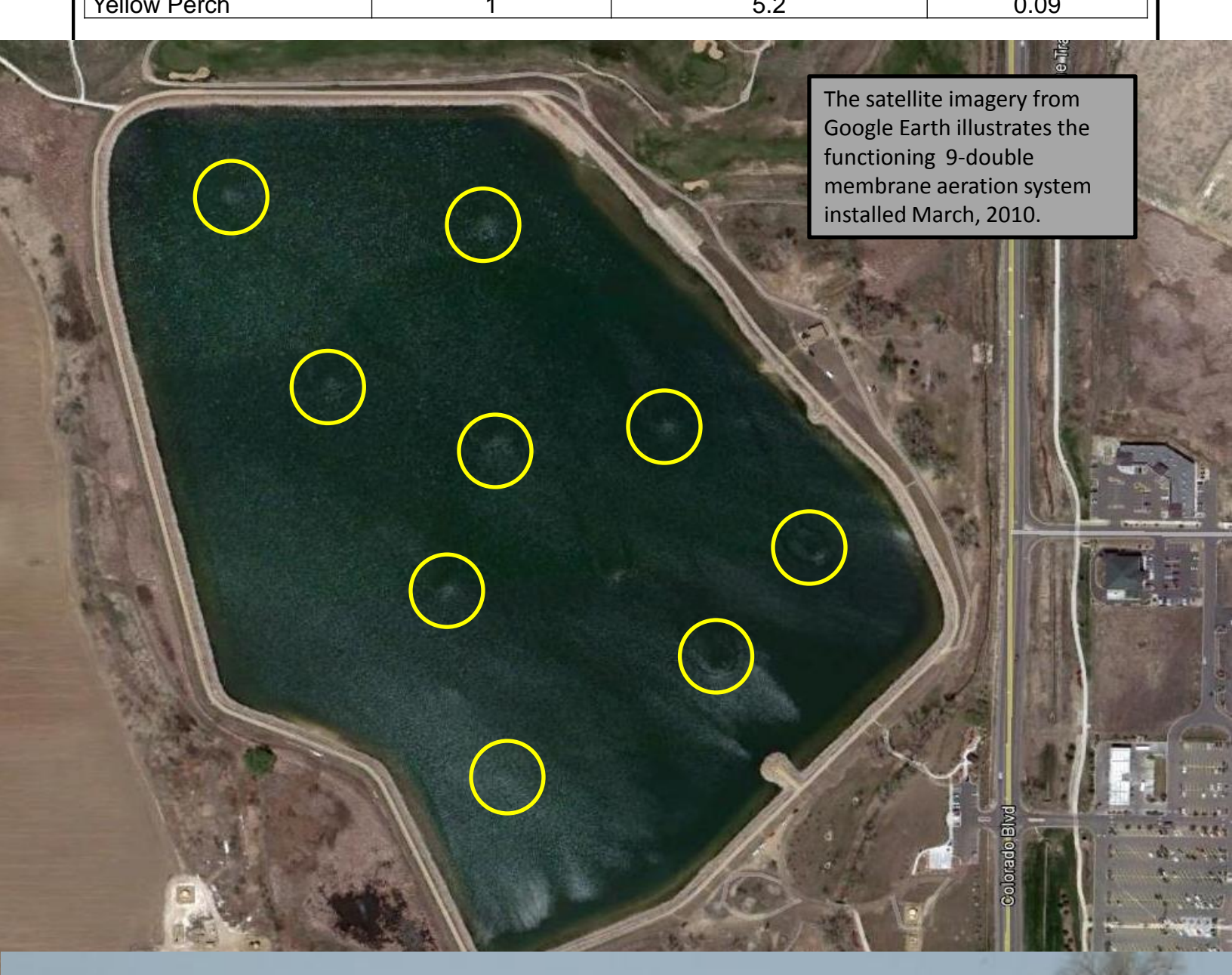


Above: The stocking history (1995-2009) for Milavec Reservoir. Rainbow trout and smallmouth bass were stocked all years between 1995-2007, while black crappie were stocked 2004, 2005, 2007, and 2008. Channel catfish have been stocked annually (minus 2008) between 2004-2009. A reasonable person would conclude Milavec is a good destination for trout, smallmouth, catfish and crappie. However, results from the annual survey data suggest quite the opposite (tables below). Despite a robust stocking regime, smallmouth bass, trout, crappie, and channel catfish were virtually non-existent in each of our surveys. The **ONLY** good news from the surveys was the presence of largemouth bass, a species which had no previous stocking history in this reservoir. Accordingly I made the switch to stocking this species of bass and cancelled further smallmouth stocking.

The larger issue of overall survival of stocked fish remained so we investigated water quality in 2009. Sure enough, dissolved oxygen in the lower third of the water column consistently measured less than 3 ppm (most species need a minimum of 5 ppm to just live, trout often need more). This shed light on the larger issue and an aeration system was installed March, 2010. Funding for the \$40,000.00 aeration system came from the Town of Frederick Parks Department (50%) and a Parks and Wildlife Fishing is Fun Grant (50%). Survey results following the installation are quite promising (read more below).

2008 Survey Species	# Caught	Average Length (Range) Inches	Average Weight (lbs)
Black Bullhead	14	7.9 (5 - 10)	0.37
Black Crappie	1	3.9	0.03
Channel Catfish	0	-	-
Fathead Minnow	17	2.7 (2 - 3)	0.01
Green Sunfish	286	4.5 (2 - 7)	0.07
Largemouth Bass	22	7.2 (4 - 13)	0.27
Rainbow Trout	0	-	-
Sacramento Perch	28	4.7 (2 - 7)	0.10
Smallmouth Bass	0	-	-
White Sucker	3	6.8 (5 - 11)	0.50

2009 Survey Species	# Caught	Average Length (Range) Inches	Average Weight (lbs)
Black Bullhead	3	7.9 (5 - 10)	0.37
Black Crappie	1	3.9	0.03
Channel Catfish	0	-	-
Common Carp	4	7.2 (5 - 9)	0.24
Green Sunfish	193	4.5 (2 - 7)	0.07
Largemouth Bass	11	7.2 (4 - 13)	0.27
Rainbow Trout	0	-	-
Sacramento Perch	2	4.7 (2 - 7)	0.10
Smallmouth Bass	0	-	-
White Sucker	3	6.8 (5 - 11)	0.50
Yellow Perch	1	5.2	0.09



The satellite imagery from Google Earth illustrates the functioning 9-double membrane aeration system installed March, 2010.



A land based photo taken from shore illustrates the aeration system (circular pattern). Heavy nutrient loading (40+ years) lead to poor dissolved oxygen levels combined with severe algae blooms. The algae bloom photo (left and right) were taken in 2006. Algae bloom still persist in Milavec but water quality (pH/oxygen) is gradually improving. Survey results will be more encouraging during 2010/2011. Look for angling results to continue to improve as well.

2010 Survey Species	# Caught	Average Length (Range) Inches	Average Weight (lbs)
Black Bullhead	34	7.3 (3 - 13)	0.31
Black Crappie	2	4.0 (3 - 5)	0.03
Channel Catfish	2	24.9 (23 - 27)	6.57
Common Carp	1	8	0.30
Green Sunfish	124	4.8 (3 - 6)	0.10
Largemouth Bass	19	6.0 (5 - 10)	0.13
Northern Pike	5	26.8 (22 - 34)	5.23
Rainbow Trout	61	11.5 (9 - 13)	0.62
Sacramento Perch	7	8.1 (7 - 9)	0.40
Saugeye	4	13.6 (12 - 17)	1.07
Smallmouth Bass	0	-	-
Walleye	1	19.8	3.33
Wiper	1	19.3	3.37
Yellow Perch	30	8.0 (4 - 10)	0.32

2011 Survey Species	# Caught	Average Length (Range) Inches	Average Weight (lbs)
Black Bullhead	12	8.0 (5 - 11)	0.32
Black Crappie	85	4.0 (3 - 5)	0.03
Bluegill	1	4.3	0.06
Common Carp	6	26.7 (23 - 29)	9.04
Green Sunfish	20	4.9 (3 - 7)	0.09
Largemouth Bass	166	5.0 (4 - 13)	0.08
Northern Pike	14	24.4 (12 - 35)	3.97
Rainbow Trout	8	10.2 (9 - 11)	0.67
Sacramento Perch	20	4.2 (4 - 8)	0.06
Saugeye	3	17.8 (16 - 19)	2.24
Smallmouth Bass	5	3.5 (3 - 4)	0.03
White sucker	2	9.1 (5 - 13)	0.48
Yellow Perch	7	10.4 (10 - 11)	0.62

On a final note, myself along with the local wildlife officer met with the Frederick City Council to discuss the elimination of the special use fee for angling at Milavec. The council unanimously agreed, the special angling fee no longer applies at this reservoir. Accordingly, all you need is a valid fishing license to try your luck at this lake (under 16 no license required). Good fishing out there!