



Boyd Lake

FISH SURVEY AND MANAGEMENT DATA

Benjamin Swigle - Aquatic Biologist (Fort Collins/Boulder)

ben.swigle@state.co.us / 970-472-4364

General Information: Serving as a state park, Boyd Lake (1700 acres) provides quality fishing for walleye, white bass, catfish, and trout. Anglers may additionally catch smallmouth bass, crappie, bluegill, and perch. The lake is open year round to fishing. State park's website: www.parks.state.co.us/Parks/boydlake

Location: Larimer County. At I-25 and US 34 (exit 257B) go W to Madison Ave. Go N 1 mile on Madison .

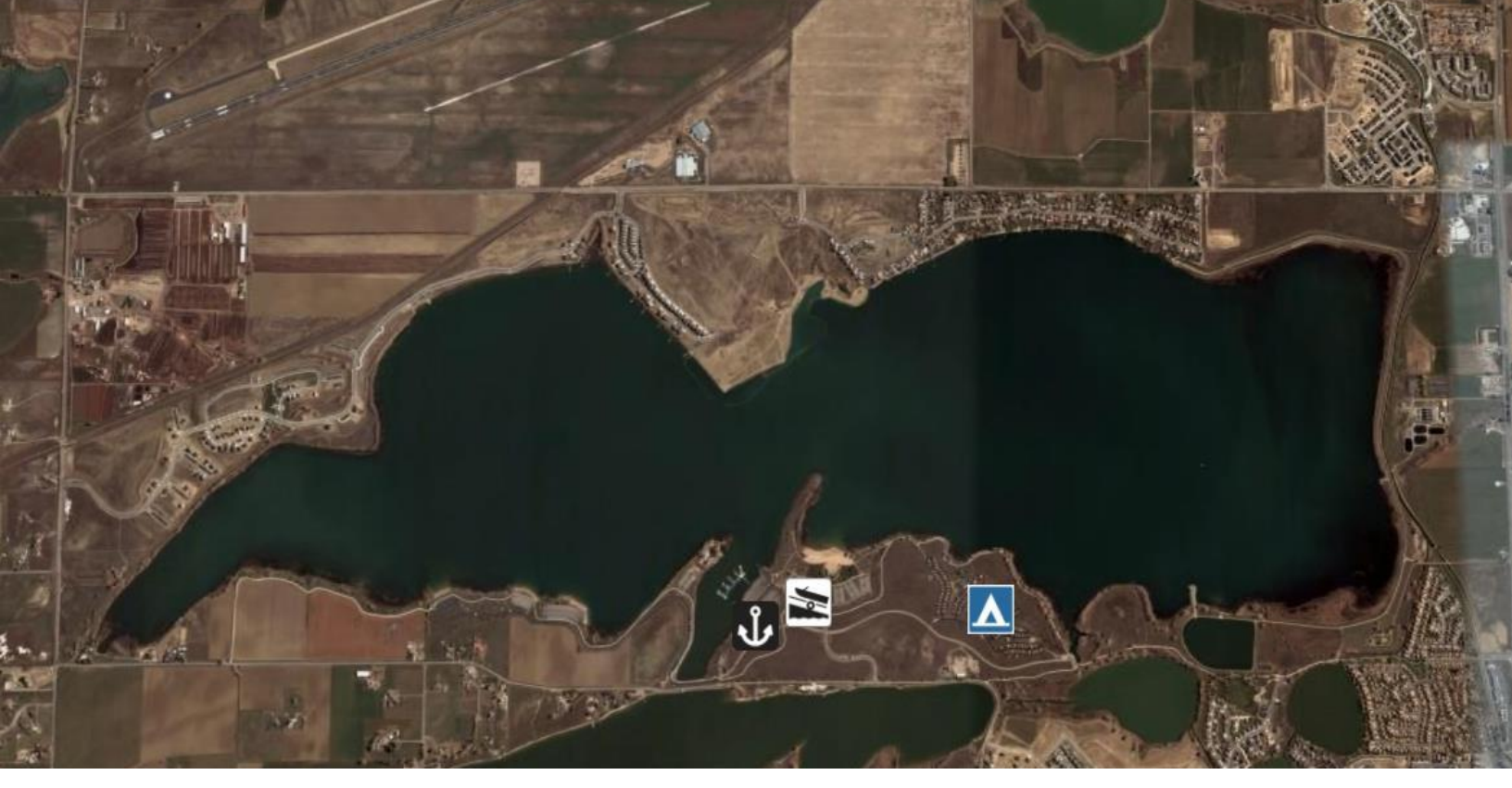
Recreational Management: Colorado State Parks

Purchase a Fishing License: <http://wildlife.state.co.us/ShopDOW/AppsAndLicenses/>

Fishery Management: Warmwater angling

Annual Survey Information: Scroll Down

<u>Amenities</u>	<u>Previous Stocking</u>	<u>Sportfishing Notes</u>
<ul style="list-style-type: none"> • Boat Ramp • Swim Beach • Modern Restrooms • RV hook-ups • Tent Camping • Hiking Trails • Marina • Picnic Areas • Ice Fishing 	<p><u>2011</u></p> <ul style="list-style-type: none"> Black Crappie Bluegill Channel Catfish Largemouth Bass Rainbow Trout Walleye White Bass <p><u>2010</u></p> <ul style="list-style-type: none"> Bluegill Channel Catfish Largemouth Bass Rainbow Trout Walleye Rainbow Trout Yellow Perch <p><u>2009</u></p> <ul style="list-style-type: none"> Walleye Channel Catfish Black Crappie Bluegill Rainbow Trout 	<p><u>Walleye</u></p> <ul style="list-style-type: none"> • Fish any rock structure when water temps are 40-50°F. • Later, fish are scattered but tube jigs, lindy rigs, triple ripples, are good choices. <p><u>White Bass</u></p> <ul style="list-style-type: none"> • Follow the birds! The white bass will be chasing shad! • Use silver castmasters or another shad imitation. • Often attracted to flows when the reservoir is filling (especially at 40-52°F). <p><u>Smallmouth Bass</u></p> <ul style="list-style-type: none"> • Bass fishing can be frustrating given the limited amount of structure. Try rock rip-rap areas with crayfish imitations! <p><u>Channel Catfish</u></p> <ul style="list-style-type: none"> • Best baits are cut shad or chicken liver. Night fishing is best.

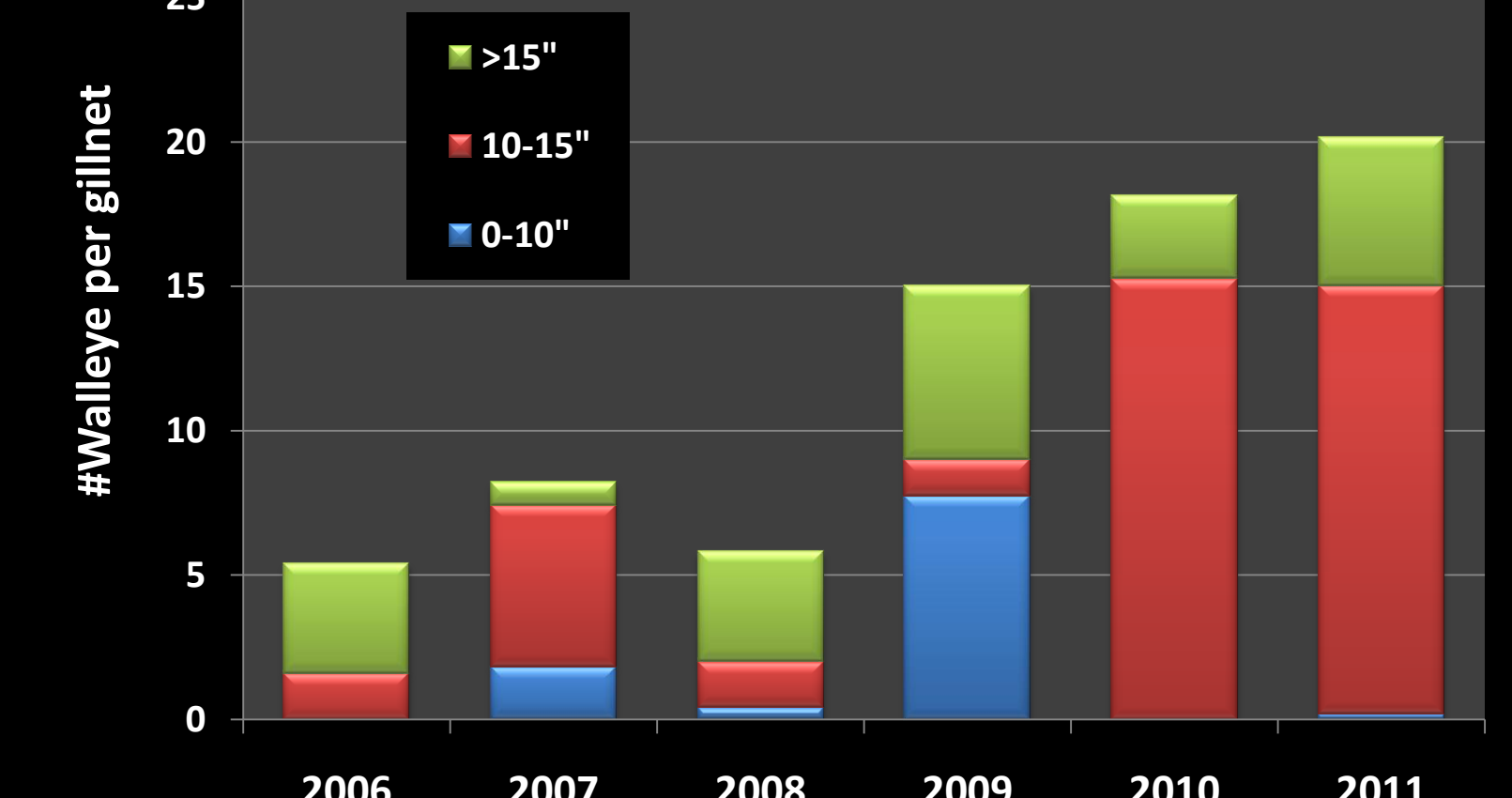


2011 Gillnetting Survey (6 nets), completed 9/9/2011

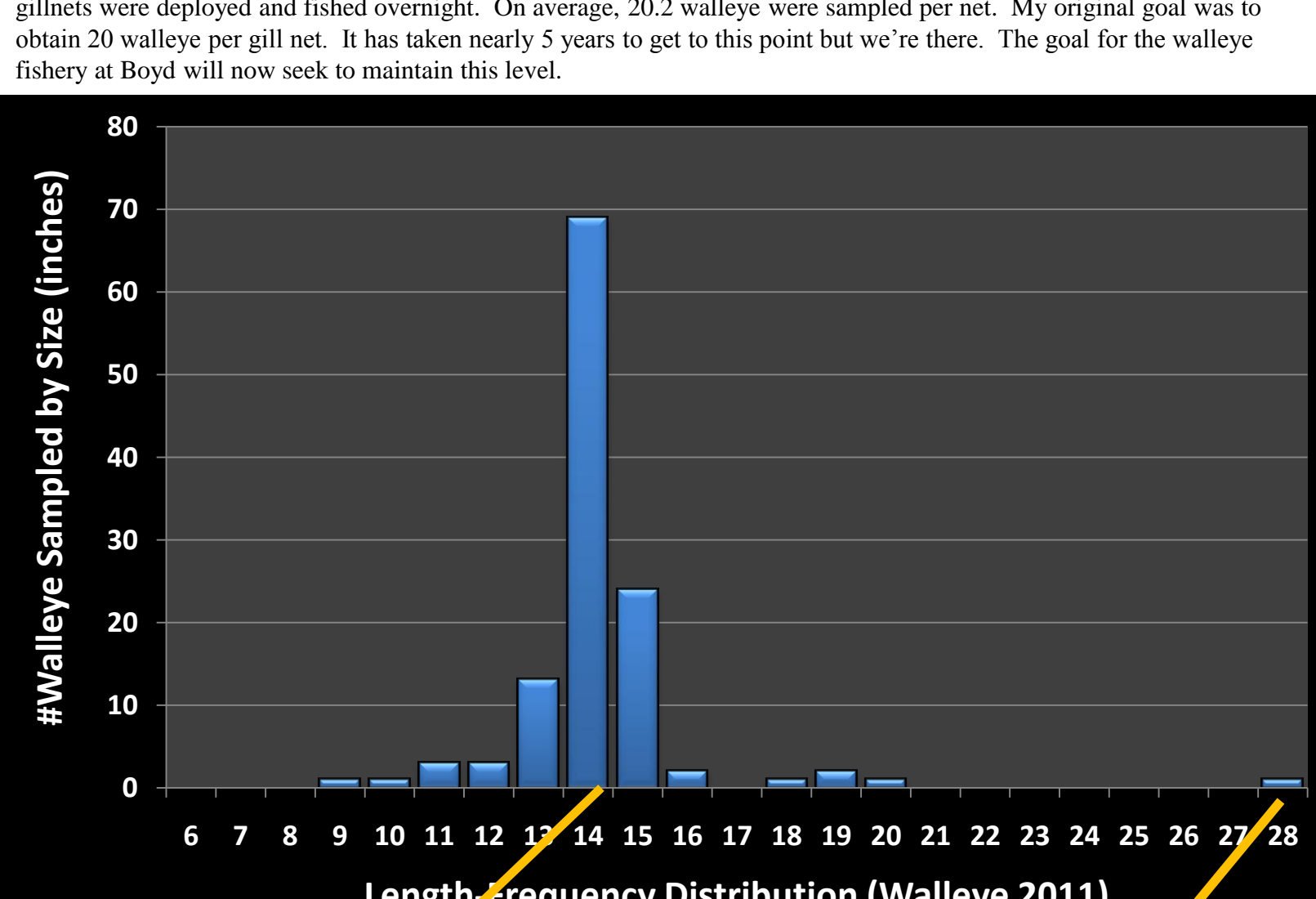
Fall 2011 Survey Species	#Caught (6 gillnets)	% Total Catch	Average Length and (Range) in inches	Average Weight (lbs)
Black Crappie	20	3.1%	8.1 (6 - 10)	0.34
Bluegill	1	0.2%	3.9	0.03
Channel Catfish	16	2.5%	17.1 (11 - 23)	1.94
Common Carp	19	3.0%	19.1 (14 - 24)	3.36
Gizzard Shad	19	3.0%	17.1 (13 - 20)	2.04
Largemouth Bass	11	1.7%	9.8 (8 - 12)	0.55
Smallmouth Bass	24	3.8%	8.7 (6 - 16)	0.42
Tiger Muskie	1	0.2%	28.5	4.85
Walleye	121	19.0%	14.8 (9 - 29)	1.12
White Bass	35	5.5%	8.9 (5 - 17)	0.65
Wiper	1	0.2%	25	9.26
White Sucker	20	3.1%	14.6 (6 - 18)	1.34
Yellow Perch	350	54.9%	7.1 (5 - 9)	0.18

2012 Fishing Forecast

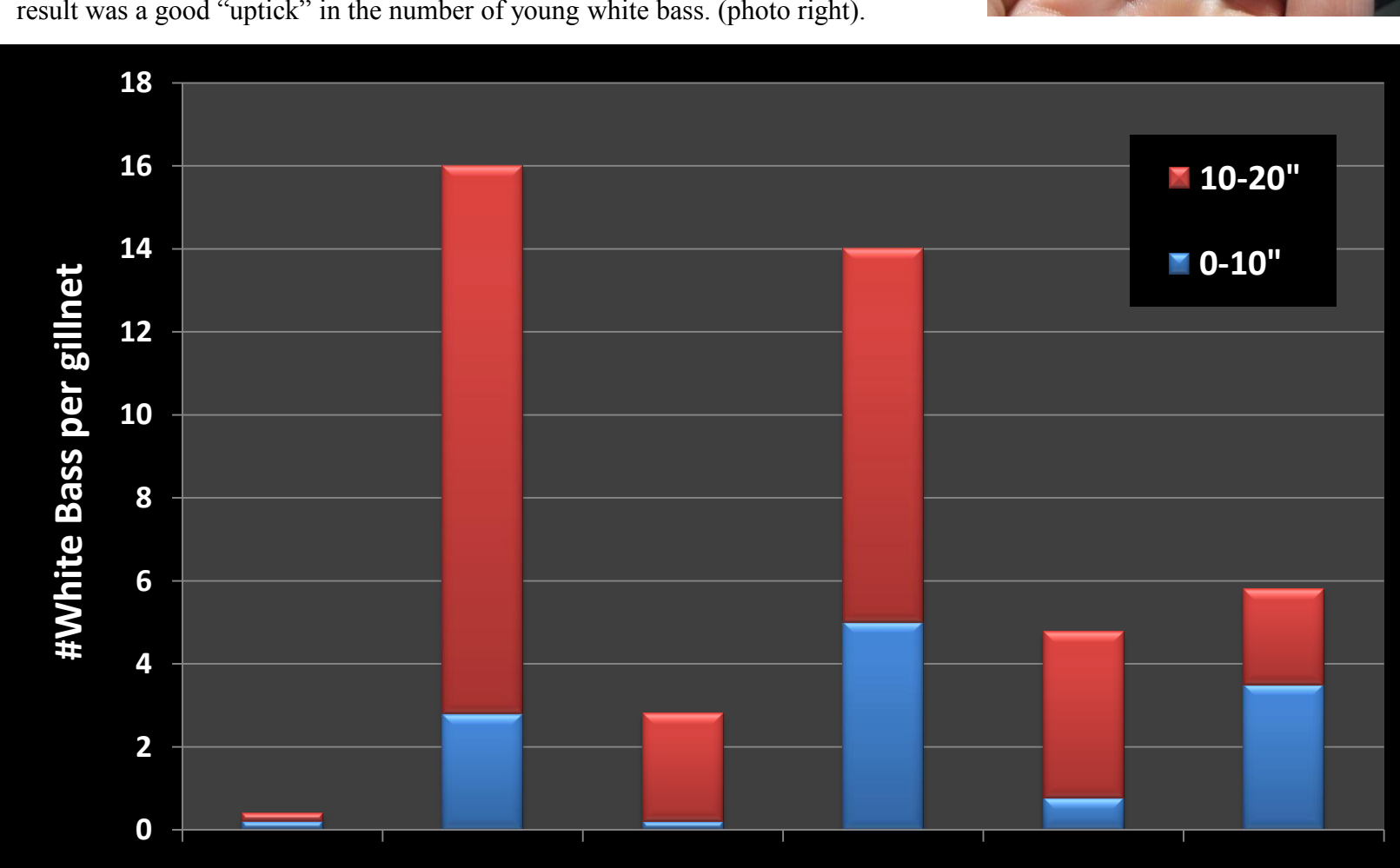
Walleye – The 2011 gillnet survey indicates walleye fishing at Boyd Lake should be the best in the past decade (>15"). Depicted in the graph is the number of walleye sampled using gillnets with the number of walleye sampled standardized per net by year. Walleye abundance has more than tripled since 2006 (5.5 walleye per net) to 20.2 walleye per net in 2011. The abundance is driven by the excellent survival of the 40,000 walleye fingerlings stocked in June 2009 (source: Pueblo hatchery). Additional walleye will be stocked in 2012. Walleye fingerlings were not available during 2011 but I am confident these fish will be available from the Pueblo hatchery May 2012. As a contingency plan, walleye fry are stocked each year but it's evident survival is mediocre in this particular reservoir. Virtually no natural production occurs in this reservoir. Walleye abundance at Boyd Lake exceeds most walleye destination lakes in surrounding states such as McConaughy, Sherman, Calamus, and Harlan. Walleye enthusiasts living along the front range need not travel too far to enjoy some quality angling.



Below – Graph illustrates the detailed length frequency distribution of the 121 walleye sampled during 2011. Six (6) gillnets were deployed and fished overnight. On average, 20.2 walleye were sampled per net. My original goal was to obtain 20 walleye per gill net. It has taken nearly 5 years to get to this point but we're there. The goal for the walleye fishery at Boyd will now seek to maintain this level.



White Bass – The white bass story for Boyd Lake is a prime example why annual sampling is so important. The 2010 survey documented a decline in white bass abundance, most notably younger fish. It's no coincidence this occurred as walleye numbers expanded but we took calculated steps not to decimate the white bass fishery in light of improving walleye catch rates. First, adult yellow perch were stocked in 2009 followed by the stocking of naturally reproducing bluegill and black crappie 2009 - 2011. Finally, 8,200 white bass fingerling (2.25") were stocked this spring to supplement this population. These fish were obtained from Nebraska Game and Parks (trade for walleye fry) and raised to 2+ inches at the Pueblo hatchery. The result was a good "uptick" in the number of young white bass. (photo right).



Rainbow Trout – Thousands of 10-inch rainbow trout are stocked annually at Boyd. In general the number we sample is relatively low by design as trout are stocked in the spring or well after we complete the fall survey. In recent years ice fishing at Boyd has become extremely popular. During the fall of 2011, 30,000 rainbow trout @10.0" were stocked.

Yellow Perch – The number of yellow perch in Boyd Lake has substantially increased. Since 2009, the increase is directly related to stocking roughly 1,200 8-12" perch from a private lake in western Loveland that was drained during 2010. The homeowners of this lake graciously allowed DOW crews to move the fish into public waters after disease testing was completed. Many of the perch we stocked were dripping eggs and milt at the time of release. These fish significantly contributed to the 2010-2011 spawn in Boyd Lake.

