



# 2012 OTC RIFLE ELK LICENSES

(Second, third and plains seasons)

Licenses are unlimited in number and available over the counter, on sale starting July 10. These ARE NOT available in the draw.

## SECOND SEASON

**DATES:** Oct. 20-28

**HUNT CODE:** E-M-000-U2-R

**SEX:** Bull

**LIST:** A

**VALID UNITS:** 3, 4, 5, 6, 11, 12, 13, 14, 15, 16, 17, 18, 21, 22, 23, 24, 25, 26, 27, 28, 30, 31, 32, 33, 34, 35, 36, 37, 38, 41, 42, 43, 44, 45, 47, 52, 53, 55, 59, 60, 62, 63, 64, 65, 68, 70, 71, 72, 73, 74, 75, 77, 78, 80, 81, 82, 83, 85, 86, 131, 133, 134, 140, 141, 142, 161, 171, 181, 211, 214, 231, 301, 361, 371, 411, 421, 441, 444, 471, 511, 521, 551, 581, 591, 681, 691, 711, 741, 751, 771, 851 except Bosque del Oso SWA, 861

**NOTE:** In unit 54 either-sex over-the-counter licenses with caps are available during the second rifle season. No bull licenses available in the second season. Hunt code: E-E-054-U2-R

## THIRD SEASON

**DATES:** Nov. 3-11

**HUNT CODE:** E-M-000-U3-R

**SEX:** Bull

**LIST:** A

**VALID UNITS:** same as second season. Except in unit 54, over-the-counter bull licenses are available in the third rifle season.

## PLAINS SEASON

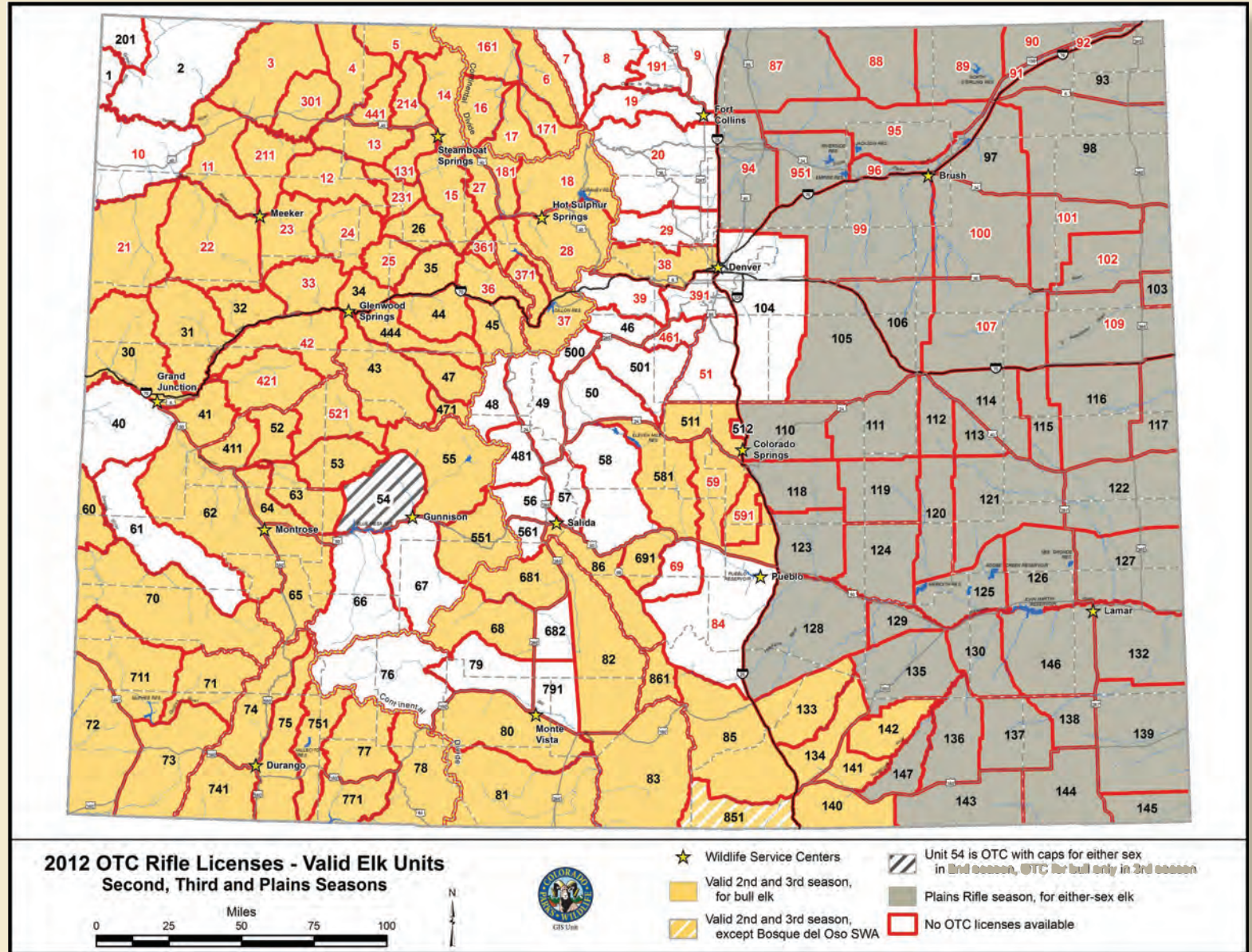
**DATES:** Sept. 1-Jan. 31

**HUNT CODE:** E-E-000-U5-R

**SEX:** Either

**LIST:** C

**VALID UNITS:** 87, 88, 89, 90, 91, 92, 93, 94, 95, 96, 97, 98, 99, 100, 101, 102, 103, 105, 106, 107, 109, 110, 111, 112, 113, 114, 115, 116, 117, 118, 119, 120, 121, 122, 123, 124, 125, 126, 127, 128, 129, 130, 132, 135, 136, 137, 138, 139, 143, 144, 145, 146, 147, 951



**Please check the 2012 Colorado Big Game hunting brochure for unit specific regulations**

**UNIT NUMBERS IN RED** indicate GMUs where chronic wasting disease has been detected. These map boundaries are only approximate. The map is **NOT** to be used in the field as an indicator of unit boundaries. See the unit descriptions on pages 56-59 of the 2012 Big Game brochure for specific boundaries.