



2012 OTC ARCHERY ANTLERLESS ELK LICENSES

Licenses are unlimited in number and available over the counter, on sale starting July 10. These ARE NOT available through the draw.

DATES:
Aug. 25-Sept. 23

HUNT CODE:
E-F-000-U1-A

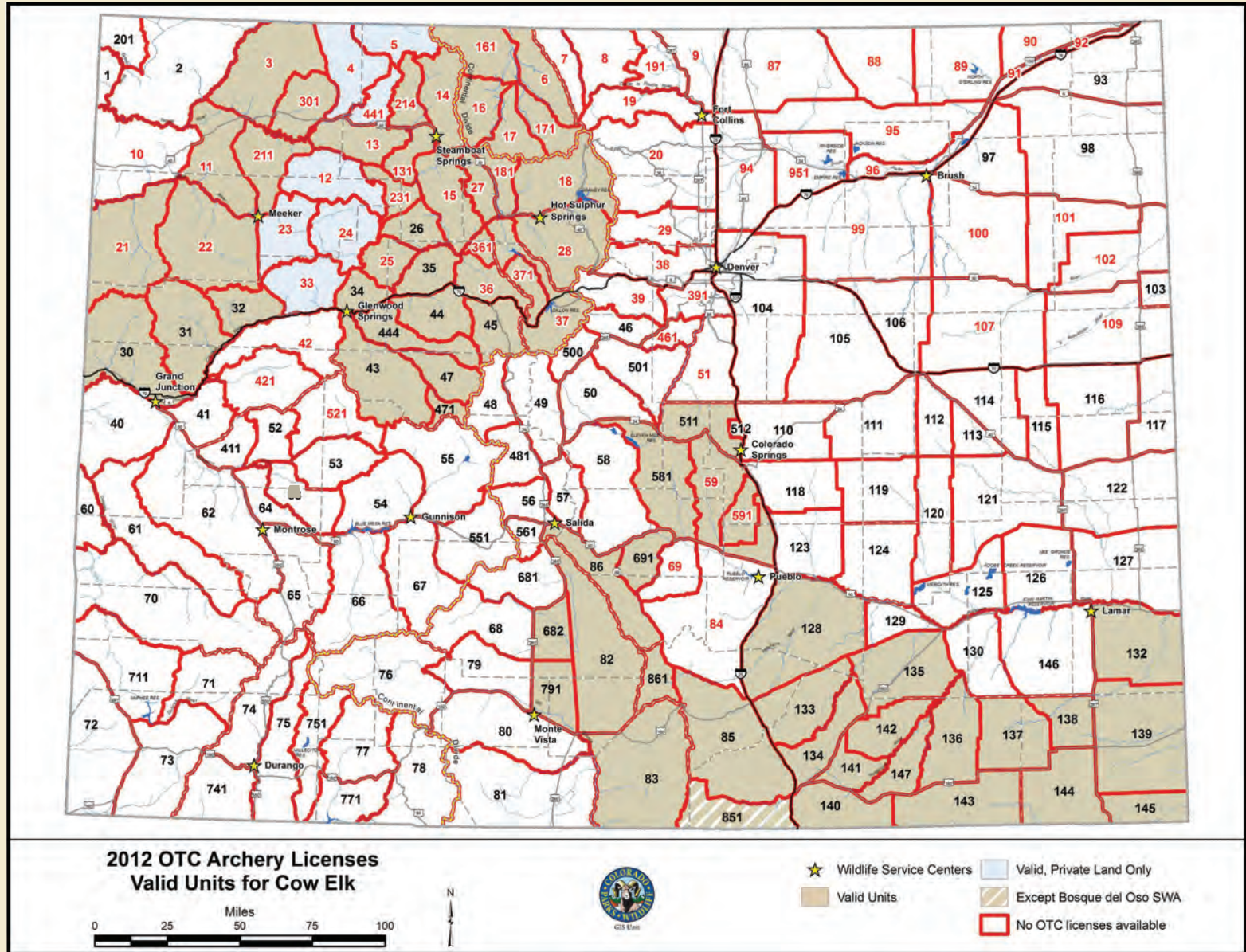
SEX: Cow

LIST: B

VALID UNITS:

3, 6, 11, 13, 14, 15, 16, 17, 18, 21, 22, 25, 26, 27, 28, 30, 31, 32, 34, 35, 36, 37, 43, 44, 45, 47, 59, 82, 83, 85, 86, 128, 131, 132, 133, 134, 135, 136, 137, 138, 139, 140, 141, 142, 143, 144, 145, 147, 161, 171, 181, 211, 214, 231, 301, 361, 371, 444, 471, 511, 581, 591, 682, 691, 791, 851 except Bosque del Oso SWA, 861

These licenses are valid on private land in units 4, 5, 12, 23, 24, 33 and 441.



Please check the 2012 Colorado Big Game hunting brochure for unit specific regulations

UNIT NUMBERS IN RED indicate GMUs where chronic wasting disease has been detected. These map boundaries are only approximate. The map is **NOT** to be used in the field as an indicator of unit boundaries. See the unit descriptions on pages 56-59 of the 2012 Big Game brochure for specific boundaries.